

CCPLib HowTo

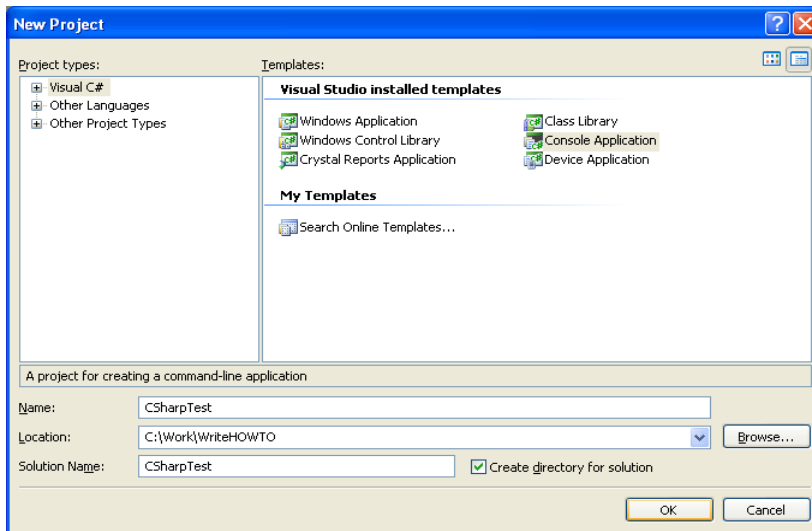
This article describes how to incorporate CCPLib Nautilus component.

First install CCPLibSetup.msi. Let's assume that it's installed using default path C:\Program Files\Nautilus\CCPLib.

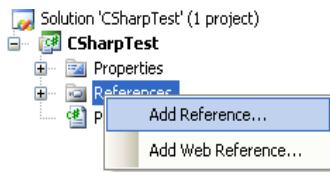
C#

1. Install any version of Microsoft Visual Studio. You can download free Express Edition here <http://www.microsoft.com/express/download/default.aspx>

2. Create a new project. In this example it is Console Application:



3. Add reference to the library CCPLib.dll. Under tab **Browse** select the file CCPLib.dll.

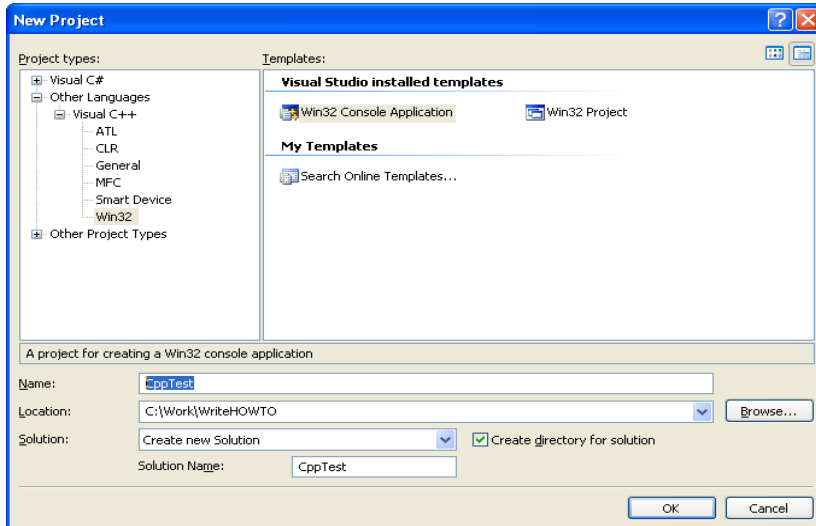


4. Now you are ready to write a program. Let's write a simple example:

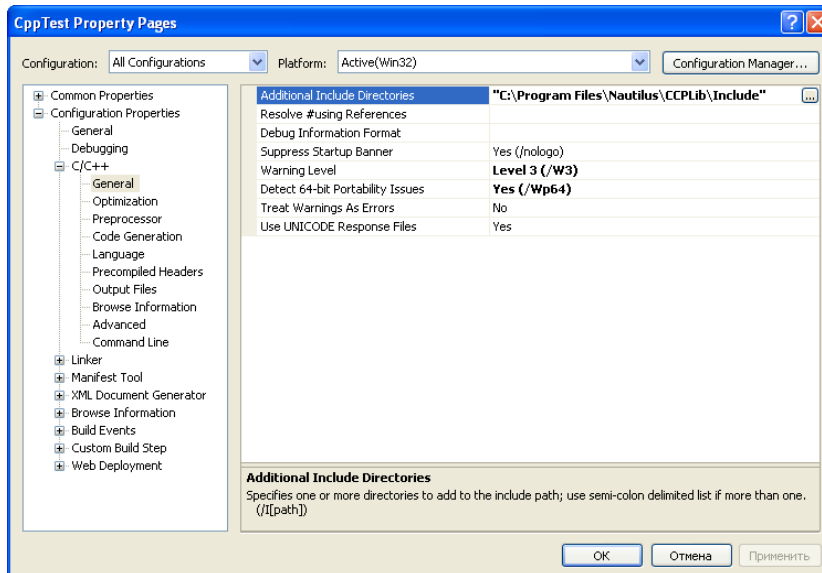
```
static void Main(string[] args)
{
    string scanned_text = File.ReadAllText(@"C:\Program Files\Nautilus\CCPLib\example.txt");
    BankCard bc = new BankCard();
    if (bc.ExtractInfo(scanned_text))
    {
        Console.WriteLine("Name: {0}, Surname: {1}, PAN: {2} ",
            bc.IATAData.FirstName, bc.IATAData.Surname, bc.IATAData.PAN);
    }
}
```

C++

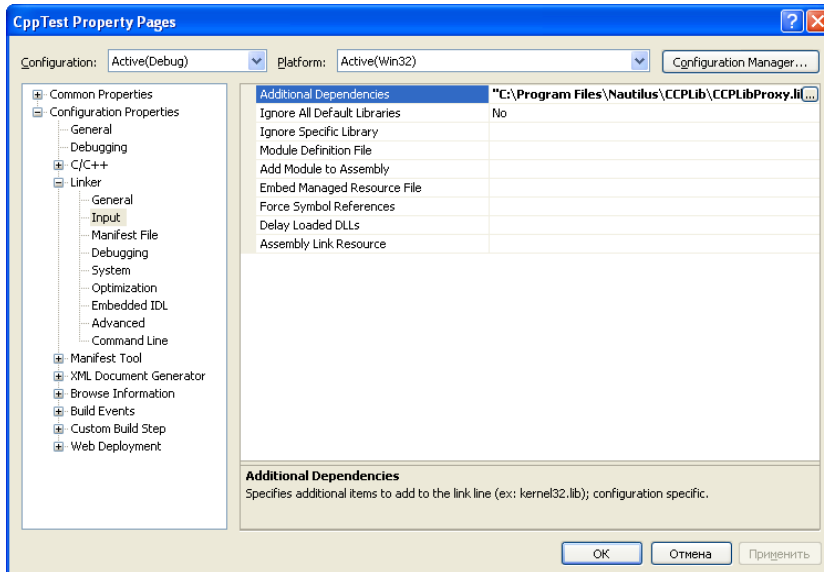
1. Install any version of Microsoft Visual Studio. You can download free Express Edition here <http://www.microsoft.com/express/download/default.aspx>
2. Create a new project. In this example it is Win32 Console Application:



3. Add an additional Include folder "C:\Program Files\Nautilus\CCPLib\Include"



4. Add an additional library CCPLibProxy.lib. It's a proxy for CCPLib.dll.



5. Now you are ready to write a program. Let's write a simple example.

```
#include "stdafx.h"  
#include <iostream>  
#include <fstream>  
#include <vector>  
#include "BankCard.h"
```

```
int _tmain(int argc, _TCHAR* argv[])  
{  
    std::vector<wchar_t> scanned_text;  
    std::ifstream dlfile("C:\\Program Files\\Nautilus\\CCPLib\\example.txt");  
    if (dlfile.is_open())  
    {  
        while (!dlfile.eof())  
        {  
            wchar_t ch = static_cast<wchar_t>(dlfile.get());  
            scanned_text.push_back(ch);  
        }  
        scanned_text.push_back(0);  
        dlfile.close();  
    }  
}
```

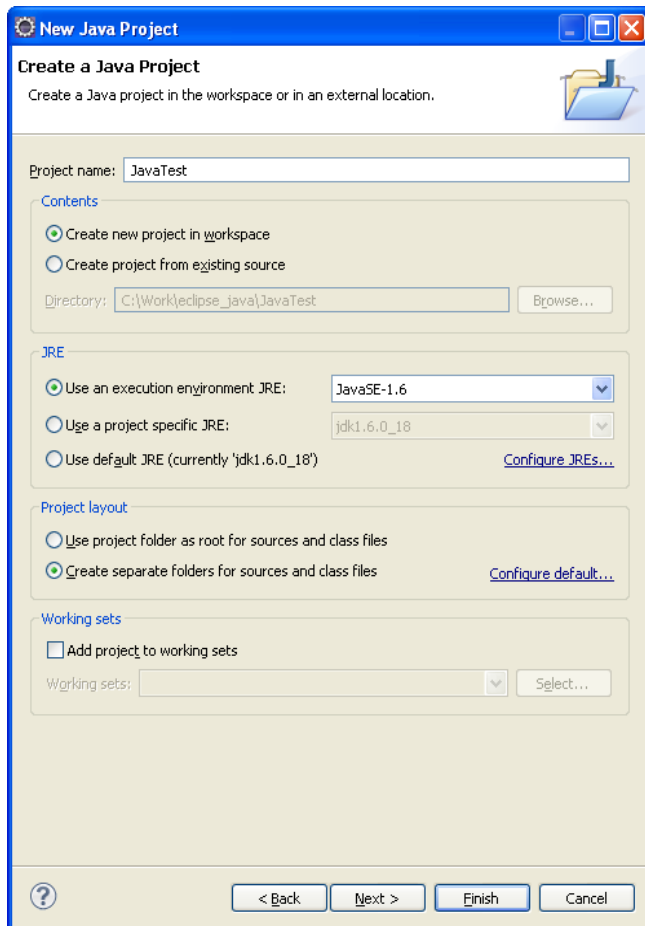
```
CBankCard bc;  
if (bc.ExtractInfo(&scanned_text[0]))  
{  
    std::wcout << "Name: " << bc.getIATADData()->getFirstName();  
    std::wcout << ", Surname: " << bc.getIATADData()->getSurname();  
    std::wcout << ", PAN: " << bc.getIATADData()->getPAN()->ToString() << std::endl;  
}  
return 0;  
}
```

NOTE: for work this program *CCPLib.dll* and *CCPLibProxy.dll* must be located in the current directory.

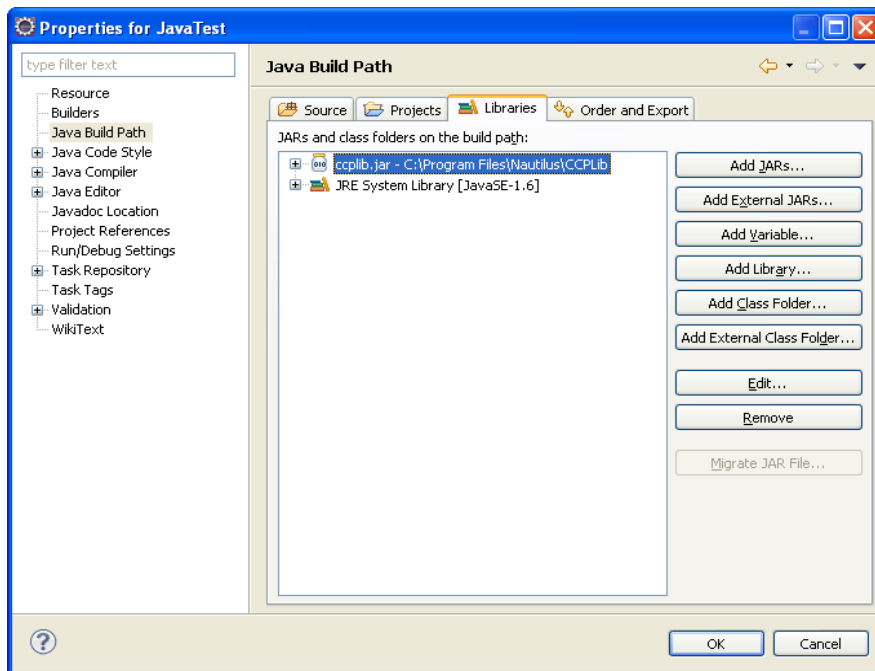
Java

1. Install any IDE. This example is based on Eclipse, you can download free copy from: <http://www.eclipse.org>.

2. Create a new Java project and click Next.



3. On the next step select a tab Libraries and click Add External JARs and add CCPLib.jar



4. Now you are ready to write a program. Let's write a simple example:

```
public static void main(String[] args)
throws SecurityException, UnsatisfiedLinkError, UnsupportedOperationException,
FileNotFoundException, IOException
{
    FileReader f = new FileReader(
        "C:\\Program Files\\Nautilus\\CCPLib\\example.txt");
    BufferedReader fis = new BufferedReader(f);
    String s, text = new String();
    while ((s = fis.readLine()) != null) text += s + "\n";
    fis.close();

    ccplib.BankCard bc = new ccplib.BankCard();
    if(bc.ExtractInfo(text))
    {
        System.out.println("Name: " + bc.getIATAData().getFirstName() +
            ", Surname: " + bc.getIATAData().getSurname() +
            ", PAN:" + bc.getIATAData().getPAN());
    }
}
```

NOTE: CCPLib.jar contains Java class with native methods. It uses c++ library **CCPLibProxy.dll**. **CCPLibProxy.dll** must be in the Windows PATH variable, therefore ensure that it's located in the current directory or in C:\Windows or C:\Windows\System32 (assuming that your Windows is installed in C:\Windows).