

DL/ID Parser Component for Windows OS



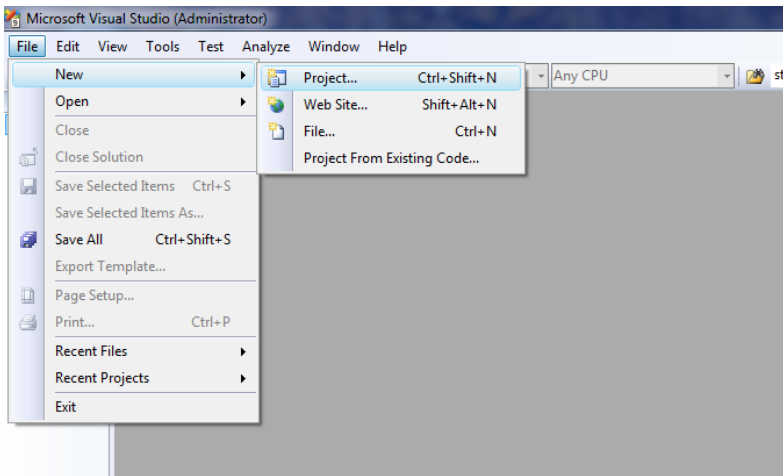
(by IDScan.net)

This publication contains proprietary information of the Wizz Systems LLC, provided for customer use only. No other use is authorized without the express written permission of

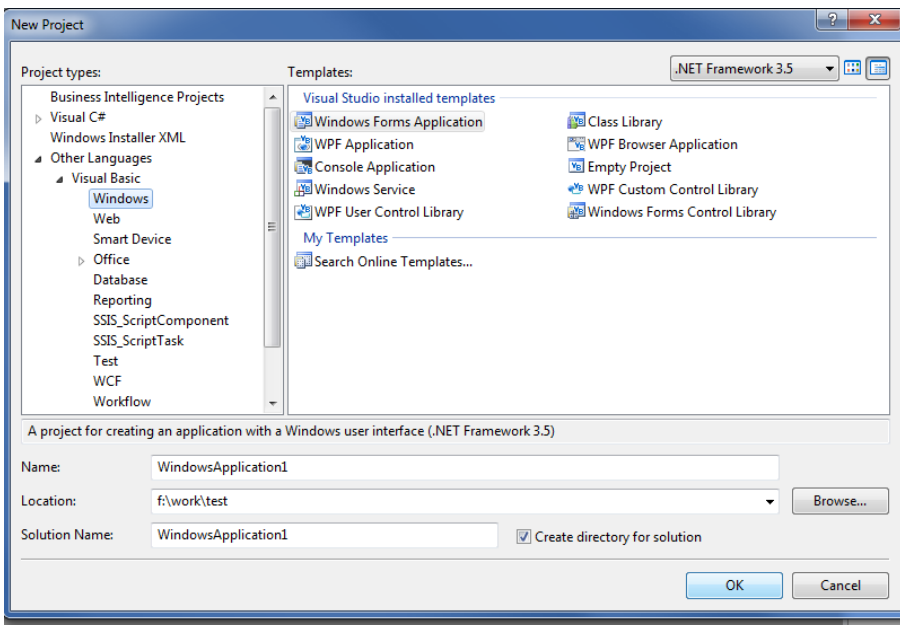
Wizz Systems LLC.

SDK Demo/Lite.

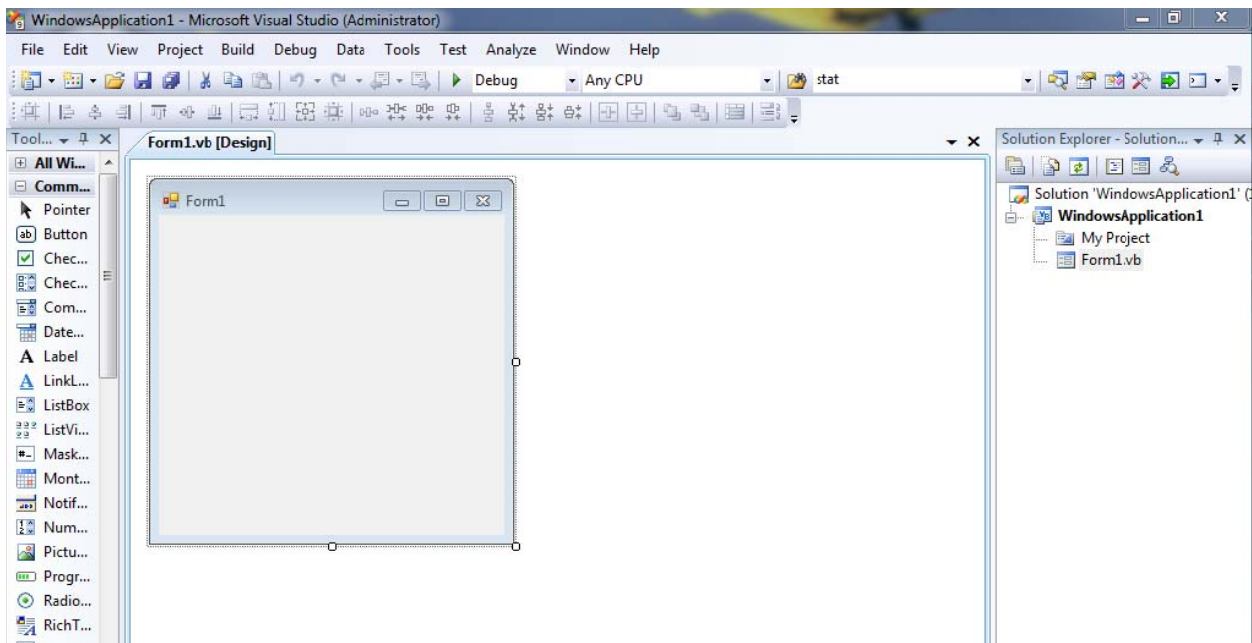
Instructions on how to obtain the Computer ID and unlock the demo version using registration key.



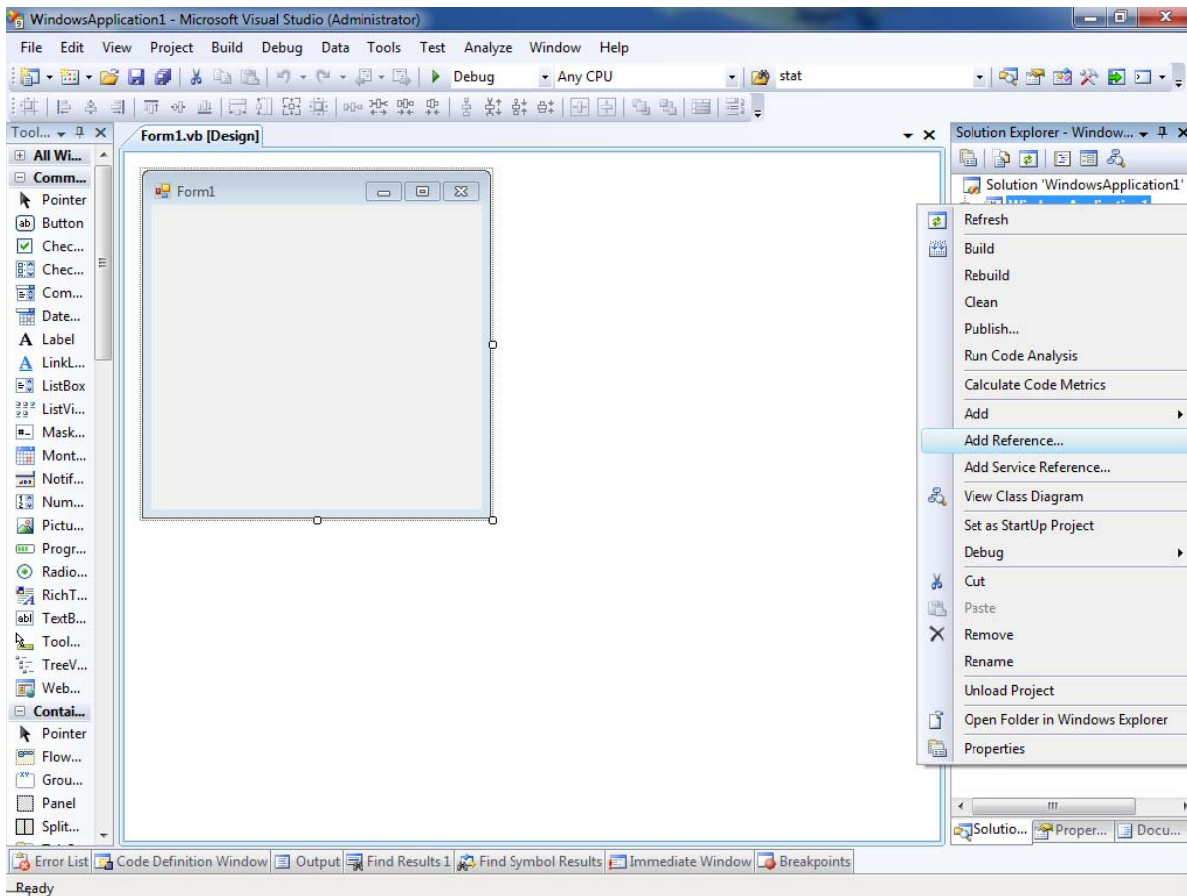
Go to **File**→**New**→**Project**



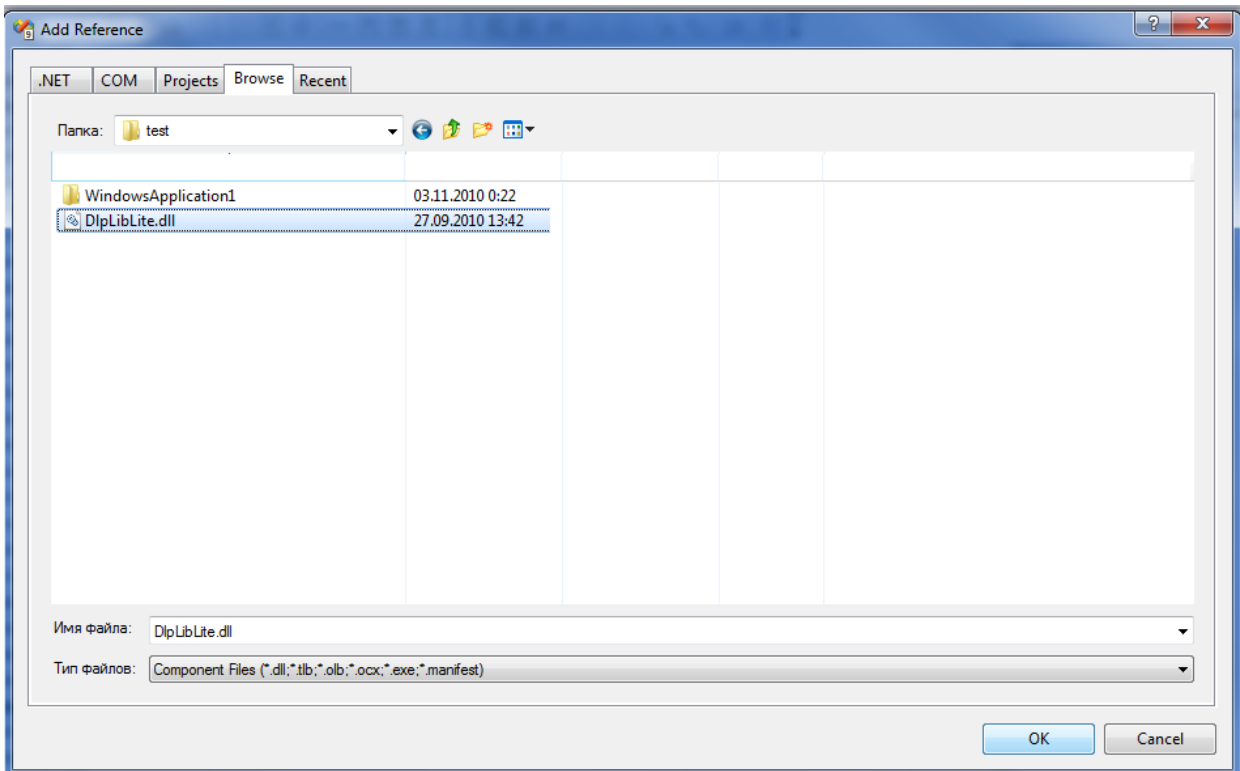
Select template **Windows Forms**



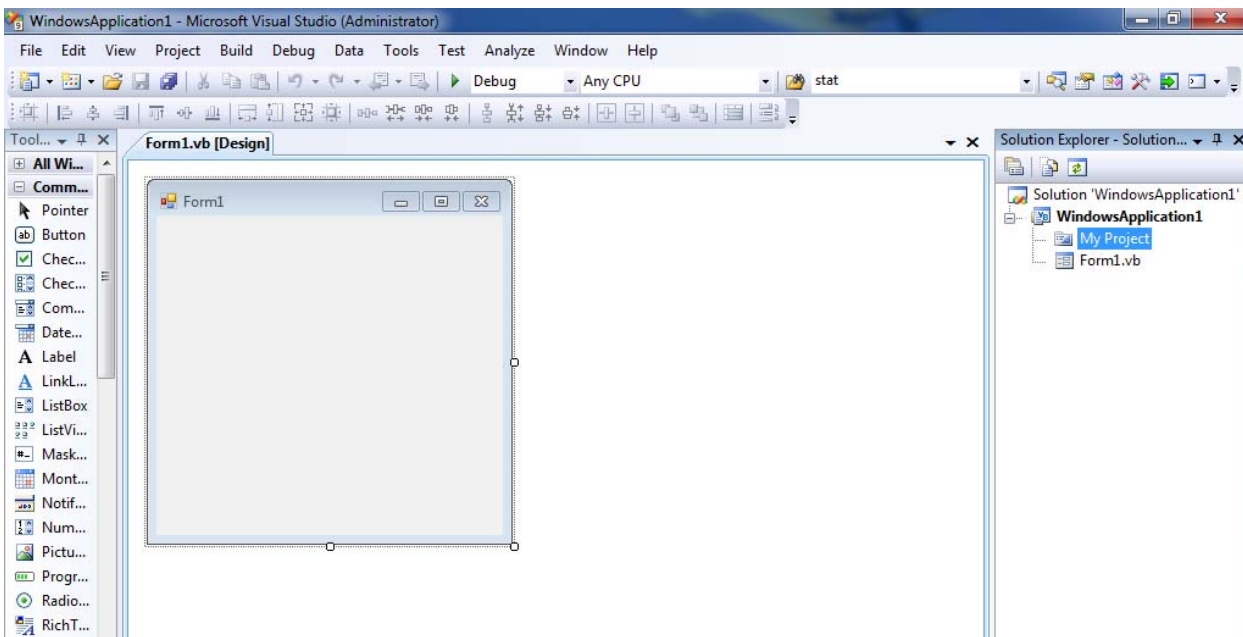
New Project has been created



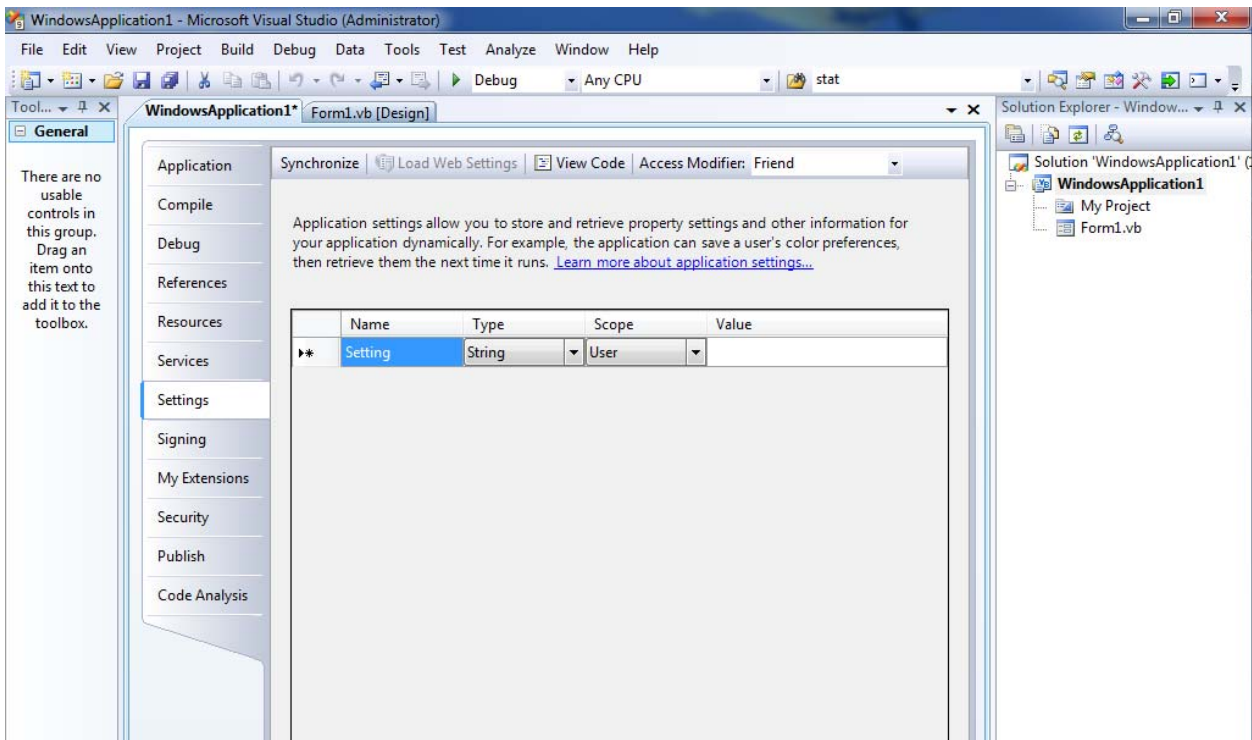
Right click on project's name in Solution Explorer, and select **Add Reference...**



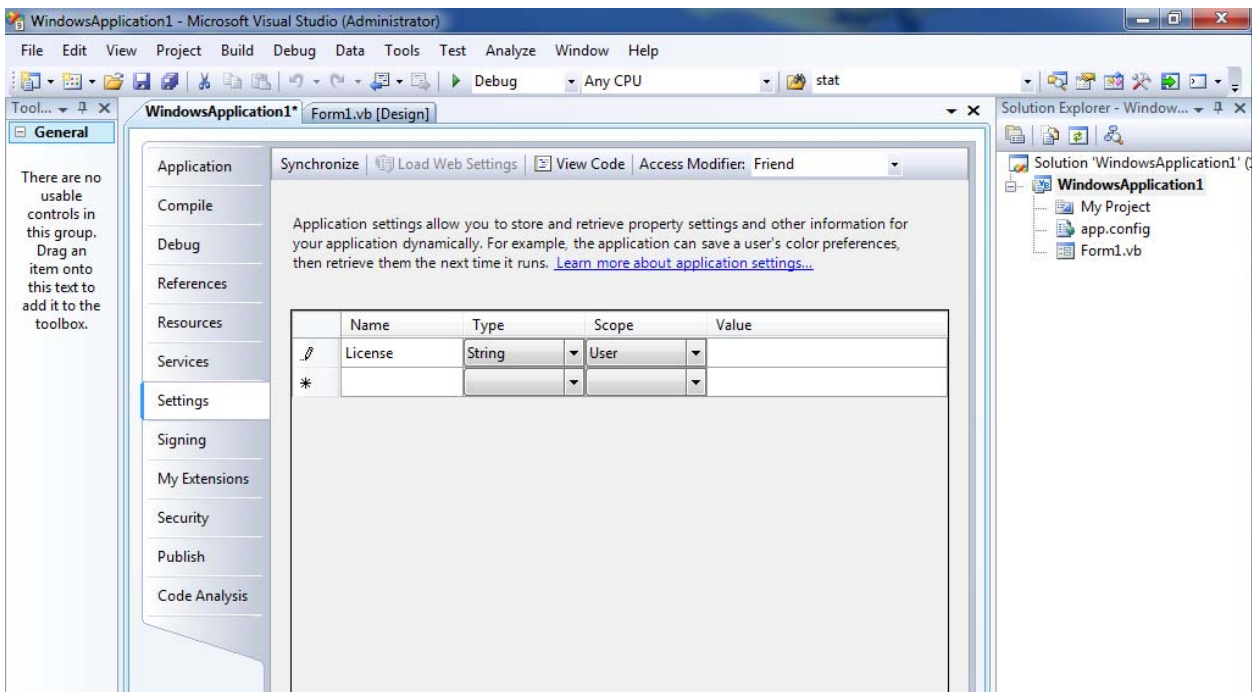
Browse and select **DlpLibLite.dll**



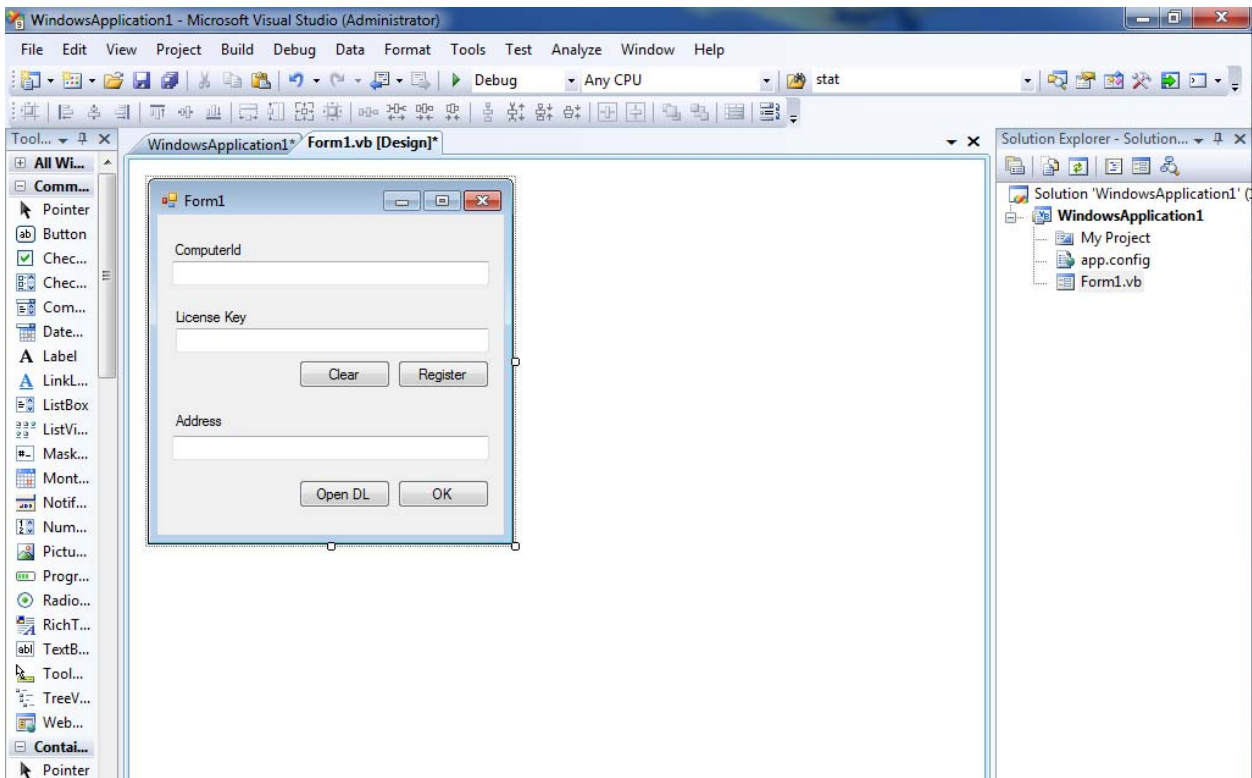
Double-click on **My Project** in **Solution Explorer**



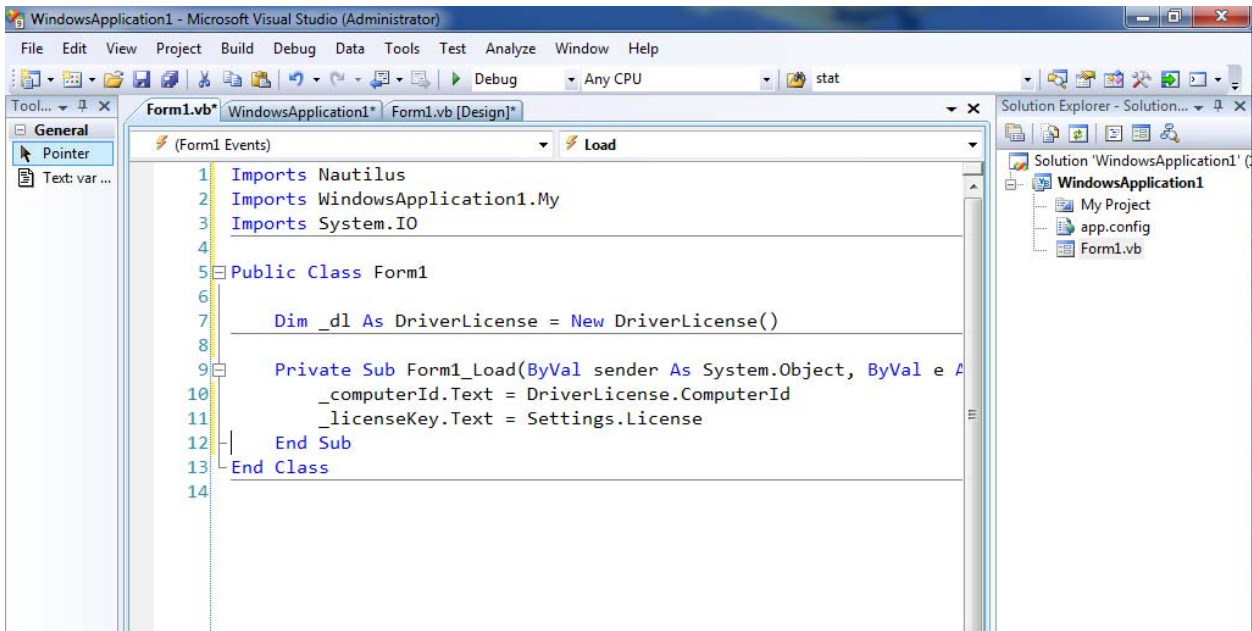
Open **Settings** tab



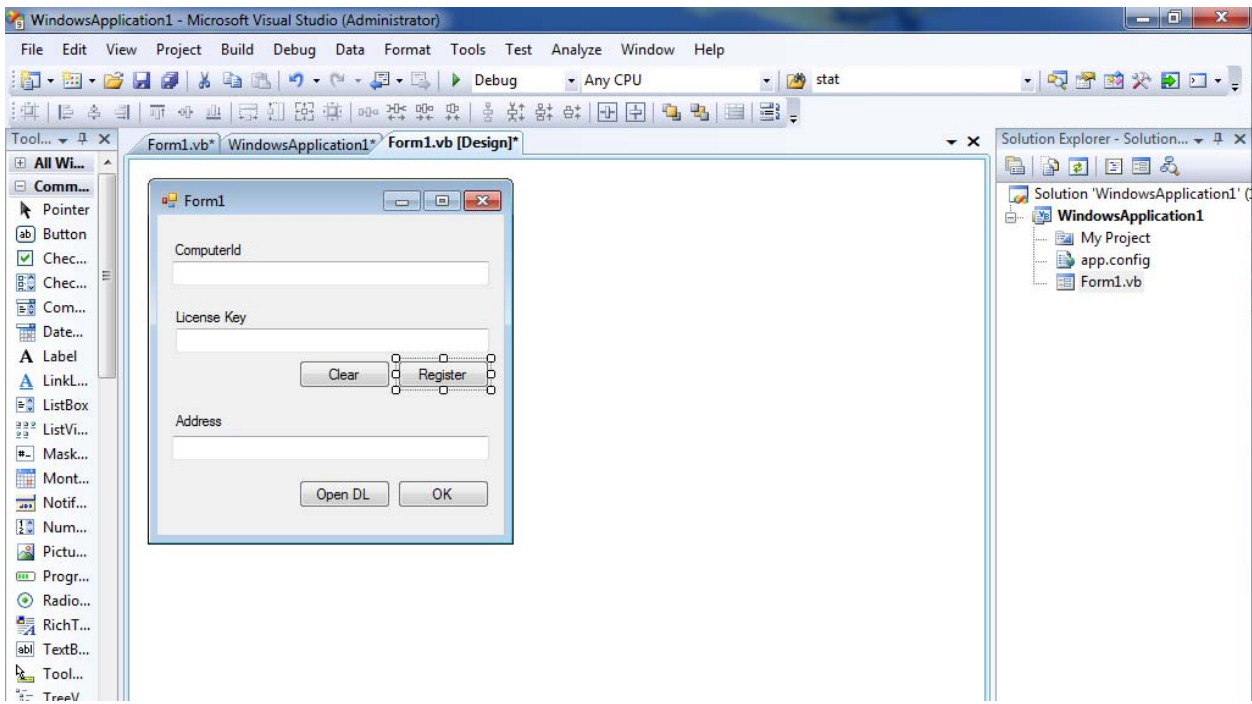
Add property **License**



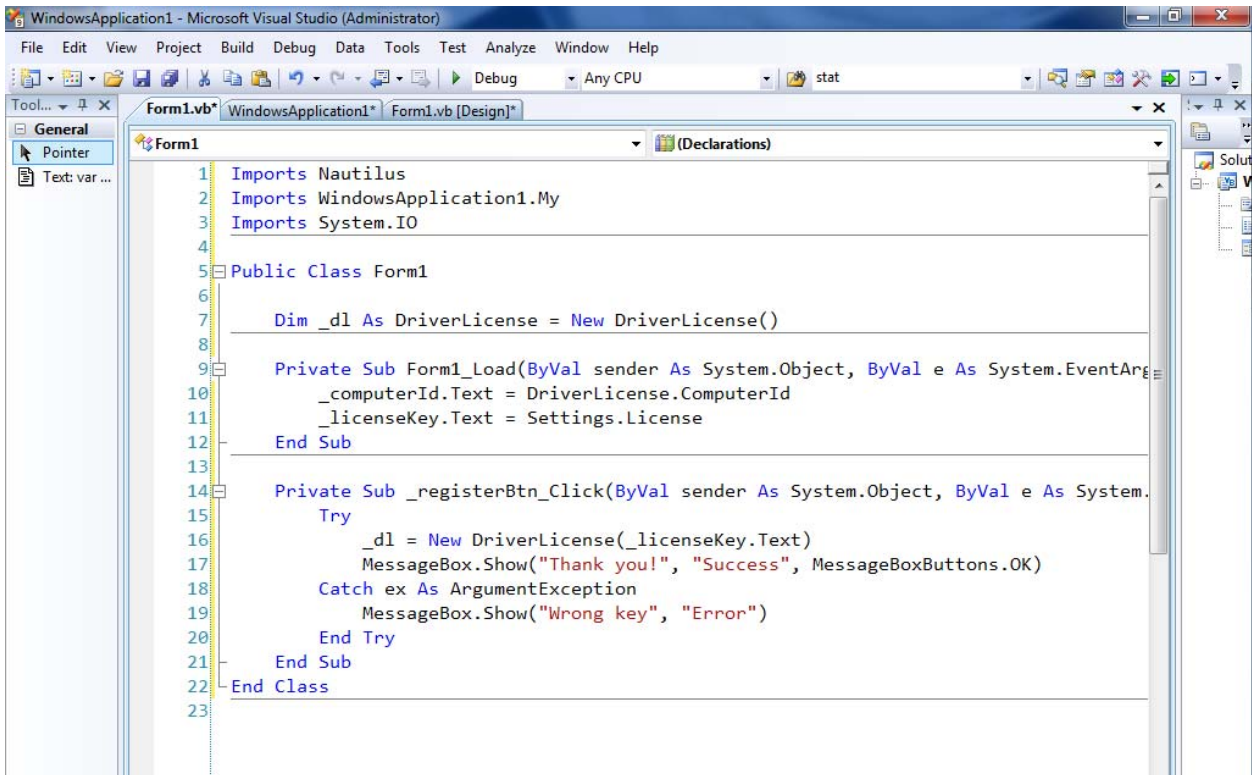
Add Labels, TextBoxes and Buttons, see the example above.



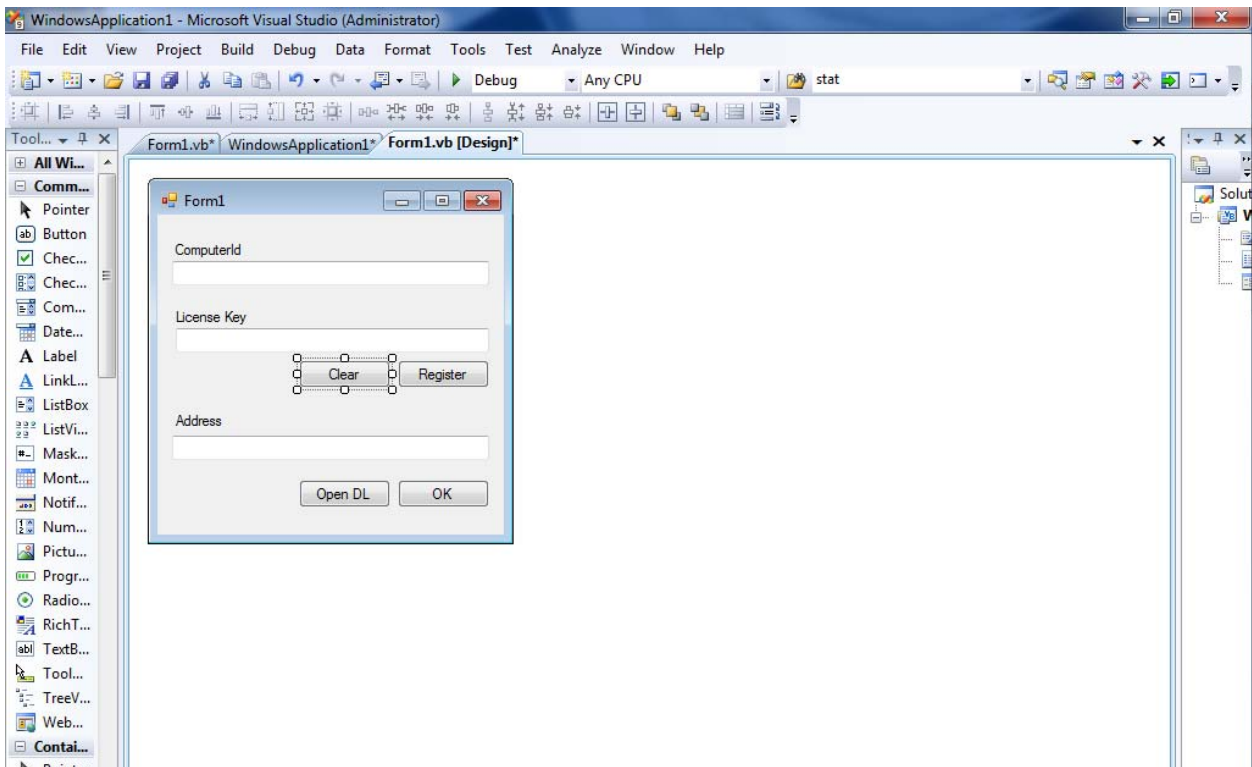
Double-click on the form. In the Code editor add import namespaces, fields and Load Form event. See the screenshot above.



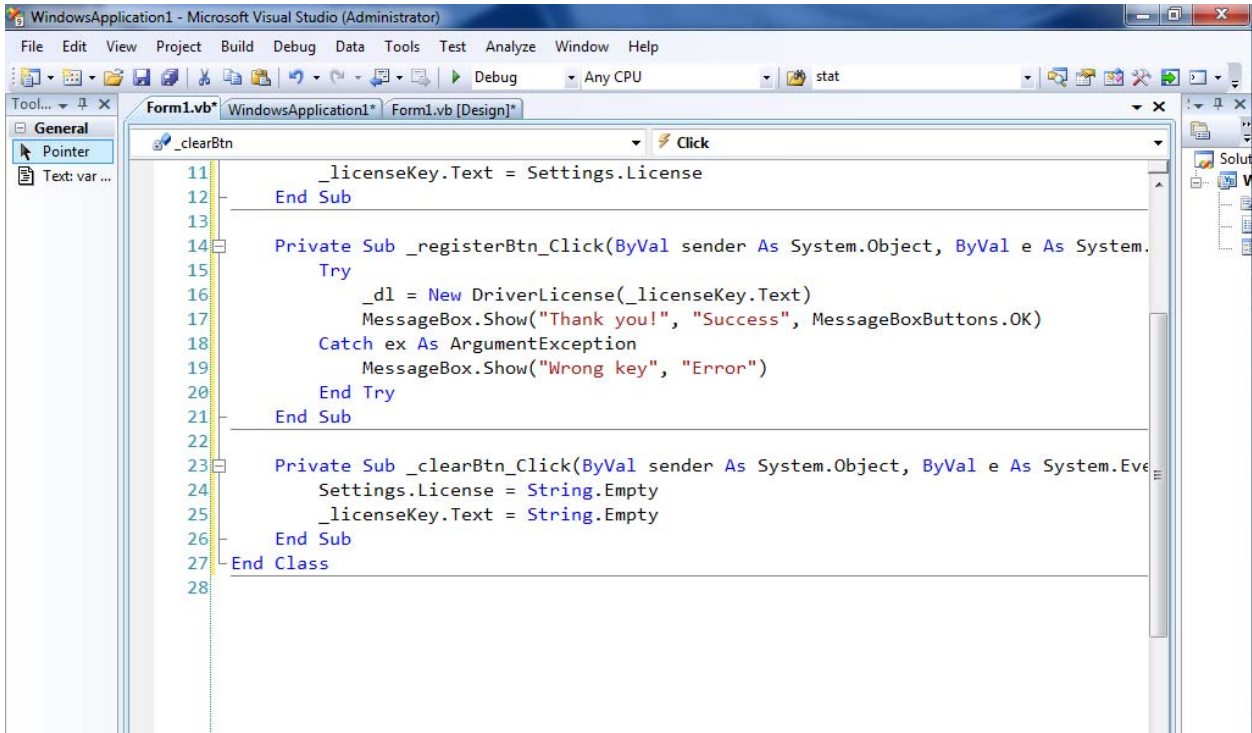
Switch to Design view. Double-click on **Register** button



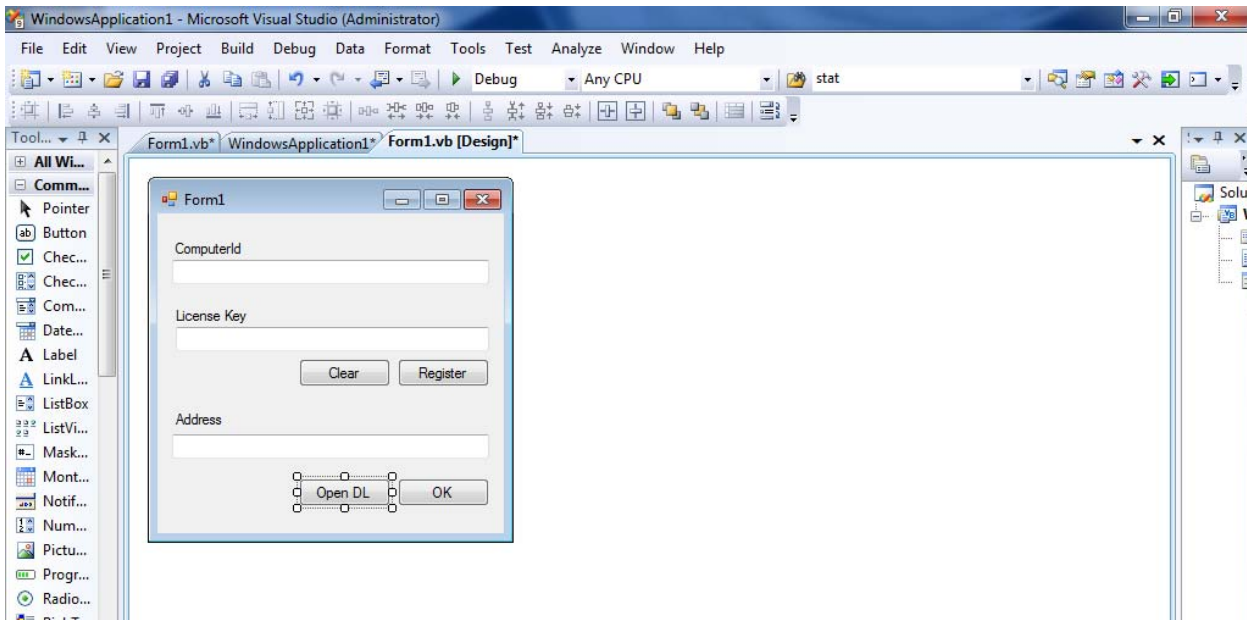
Switch to Code Editor and add the code.



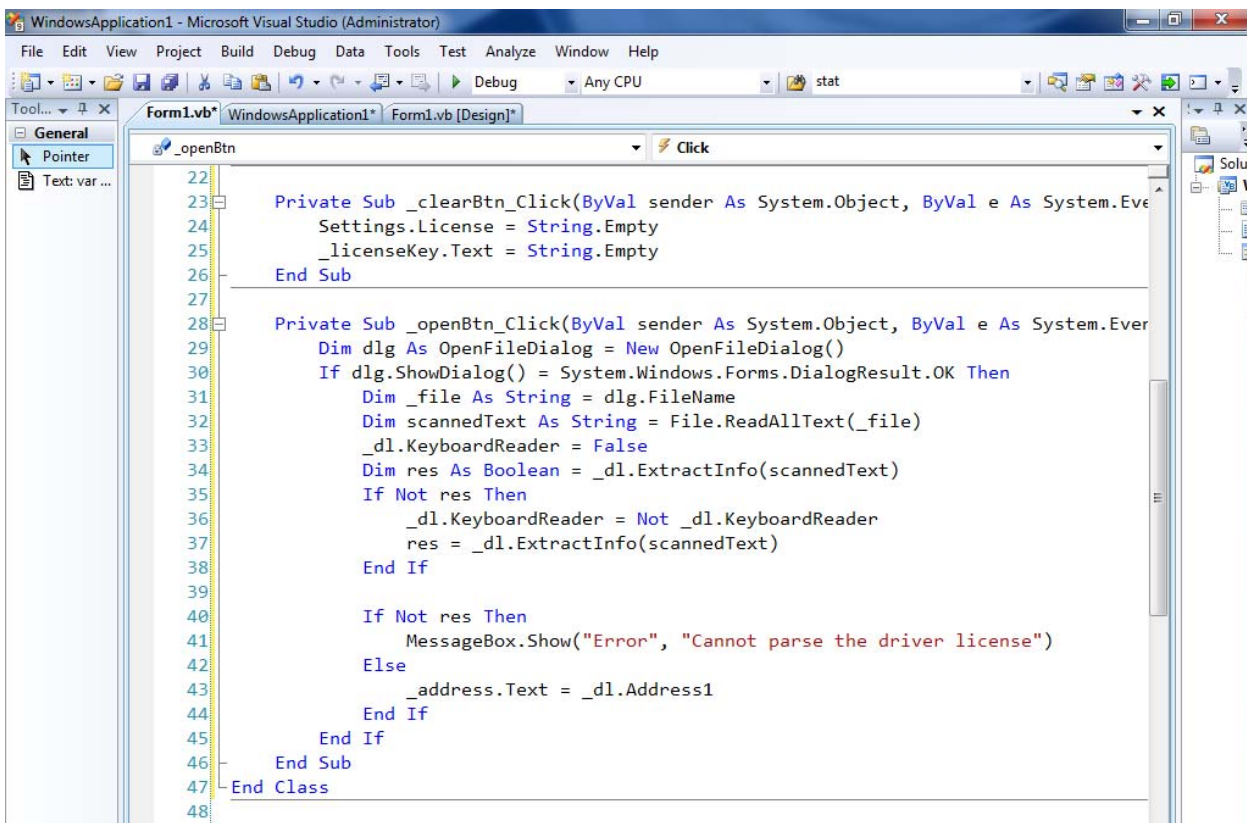
Switch to Design view. Double-click on **Clear** button.



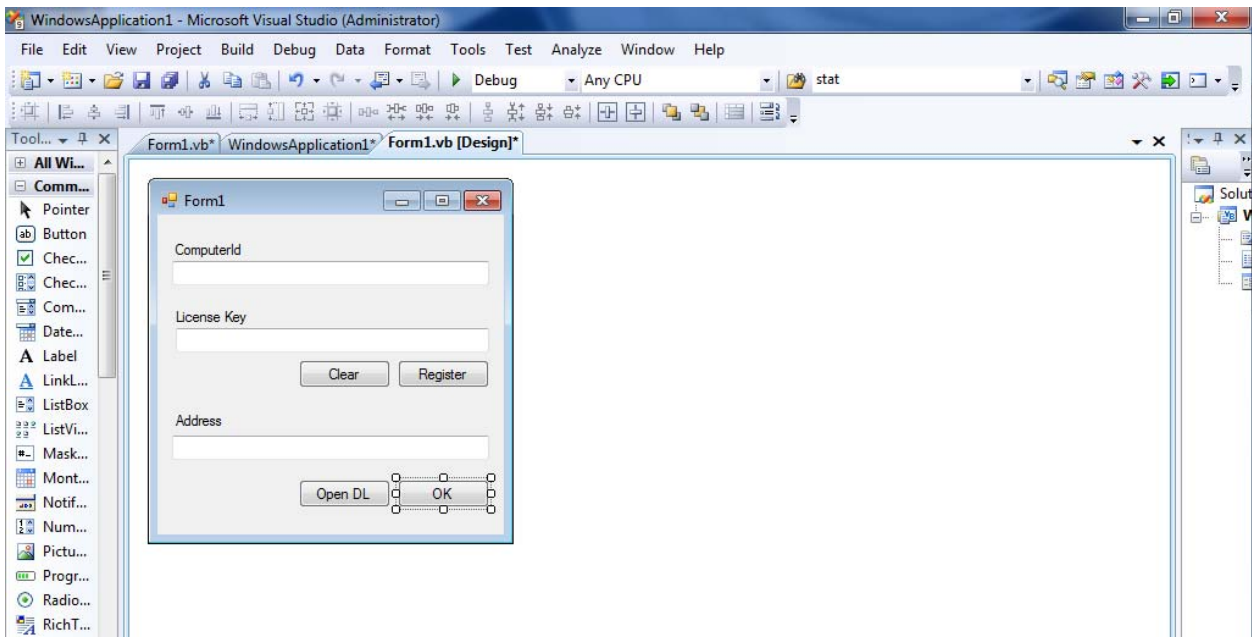
Add the code for the Button click event



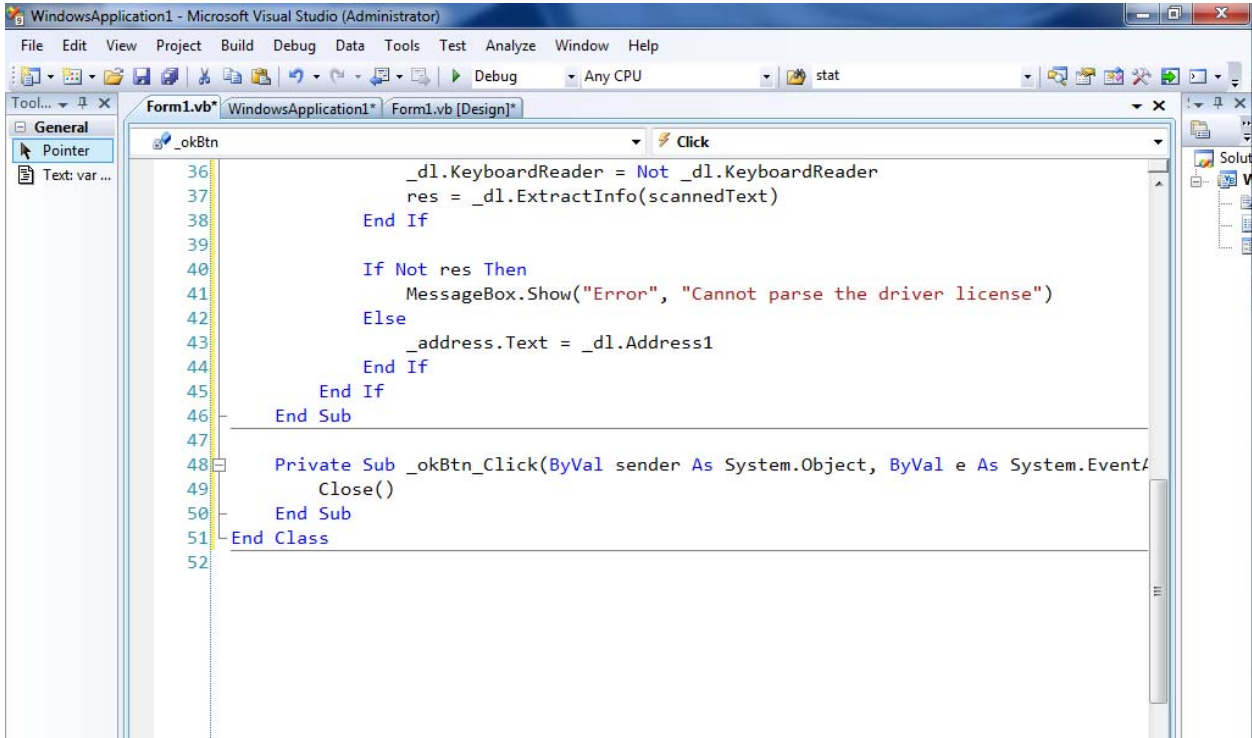
Switch to Design View. Double-click on **Open DL** button.



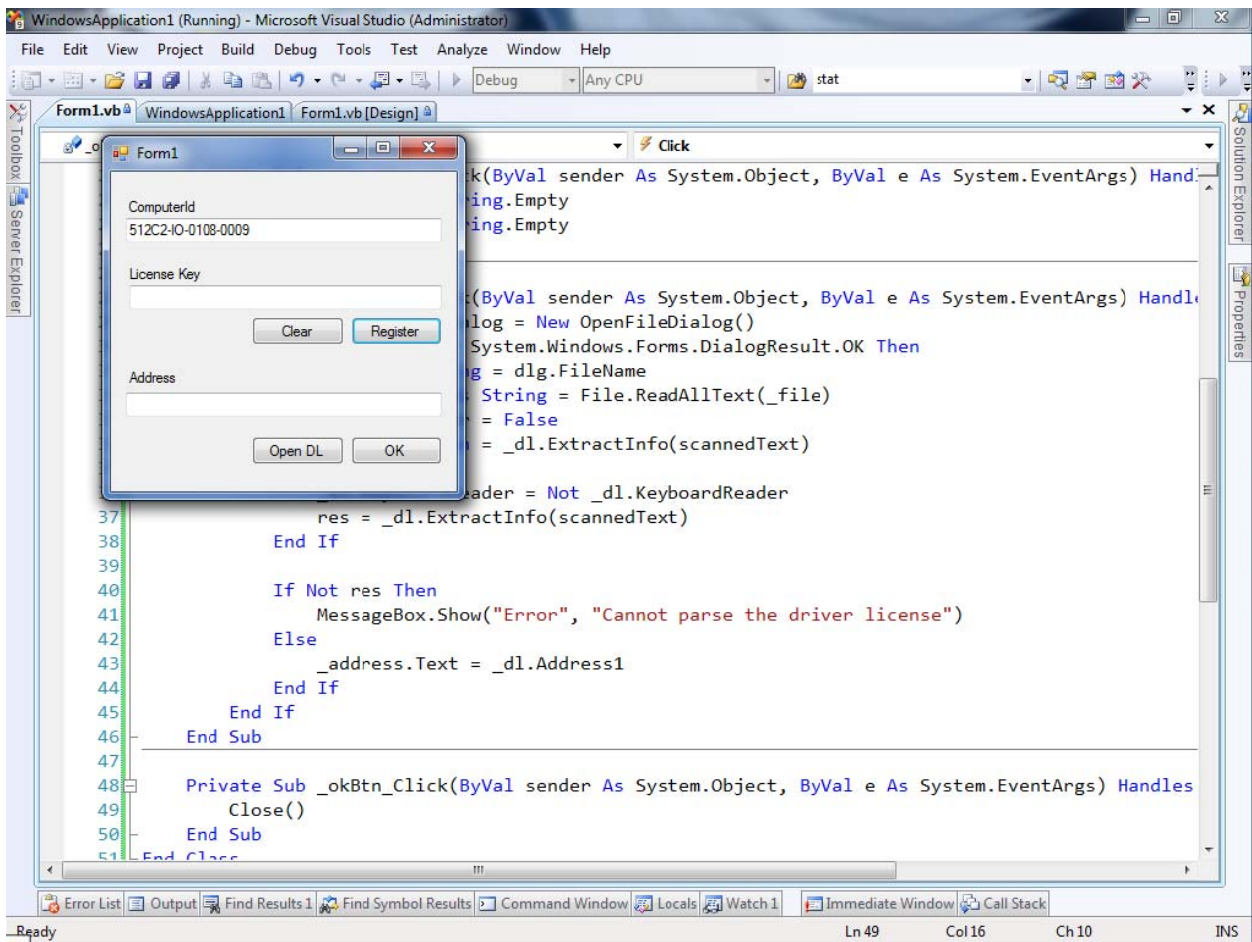
Add the code above for Click event



Switch to Design view. Double-click on **OK** button.



Add the code above for Click event



Build and run the application.

WARRANTY

Wizz Systems LLC provides this publication “as is” without warranty of any kind, either express or implied, including, but not limited to, the implied warranties of merchantability or suitability for any particular purpose.

Wizz Systems LLC reserves the right to revise this publication, and to make changes in the content hereof from time to time without notification. Some countries or states in the USA do not allow a disclaimer of express or implied warranties in certain transactions; if you are a resident of such country or state, this statement may not apply to you. This publication may include technical inaccuracies or typographical errors. Changes are made periodically to the information herein; these changes will be incorporated in new editions of the publication. Wizz Systems LLC may make improvements and/or changes in the products and/or the software described in this publication at any time.

NOTICE TO USER

This manual should not be construed as a representation or warranty with respect to the software named herein. Occasionally, changes or variations exist in the software that are not reflected in the manual. Generally, if such changes or variations are known to exist and to affect the product significantly, a release note or “read me” file accompanies the manual and/or the distributed software. In that event, be sure to read the release note or “read me” file before using the product.

PUBLICATION

The descriptions, specifications, design and procedures contained in this manual were effective at the time of publication of this manual. Wizz Systems LLC reserves the right to modify any of the above at any time without notice and without incurring obligations.