



VeriAge Wizz Plus – age verification, data capture and customer tracking software. Reads Magnetic Stripe and 2D Barcode (PDF417) from Driver’s Licenses.

Contents

Introduction.....	2
Requirements for VeriAge Wizz Plus	2
Installing VeriAge Wizz Plus.....	3
Uninstalling VeriAge Wizz Plus	3
Getting Started	4
Versions	9
Registration	9
Reports.....	11
Options.....	12
Contacts	18

Introduction

Nautilusware VeriAge Wizz Plus Program allows reading, displaying and saving information encoded in the magnetic stripe or 2D barcode (PDF417) of US and Canada driver's licenses.

Authorities issuing IDs (in this case we refer to ID's issued by DMV), encode certain information about a person in the magnetic stripe and/or 2D barcode, printed on the back of the ID. That information includes the Name of the person, Full Address, Gender, Date of Birth, and other information required by the issuing authority.

VeriAge Wizz Plus is capable of reading practically all USA and Canada standards (excluding Driver's License from Georgia due to decoding).

Partial list of DL fields:

Last Name	Birthday
First Name	Drivers License Number
Middle Name	License Expiration Date
Address1	Sex
Address2	Height
City	Weight
State	Hair Color
Zip Code	Eye Color

Requirements for VeriAge Wizz Plus

- x86 compatible PC computer with MS Windows 2000 or higher with .NET Framework (free download), min 256Mb RAM, 10Mb free space on HDD
- Magnetic stripe reader capable of reading 3 Tracks (not just 2, which is used for majority of credit cards) or 2D Barcode (PDF417) scanner.

Please note some devices require necessary adjustments. If you need any help with setting up your device please visit our FAQ section (www.idscan.net/forum) or send an email to support@nautilusware.com

You can find additional information on how to obtain or setup readers/scanners on our web-site www.nautilusware.com

Installing VeriAge Wizz Plus

Step 1: Insert the VeriAge Wizz Plus CD-ROM into your CD/DVD drive on your PC.

If you have a feature called "Autorun" activated, this will start your installation process automatically.

If you do not have "Autorun" activated, you can go to My Computer > Click on the drive letter of the CD/DVD drive > click setup.exe

Step 2: Follow prompts until you are finished installing the software.

Step 3: Restart your PC

You can also download the installation file from our web site (in that case you do not need a CD): www.idscan.net

Uninstalling VeriAge Wizz Plus

Step 1: Go to Start > Control Panel > Add or Remove Programs.

In some operating systems, you will find - **Start > Settings > Control Panel.**

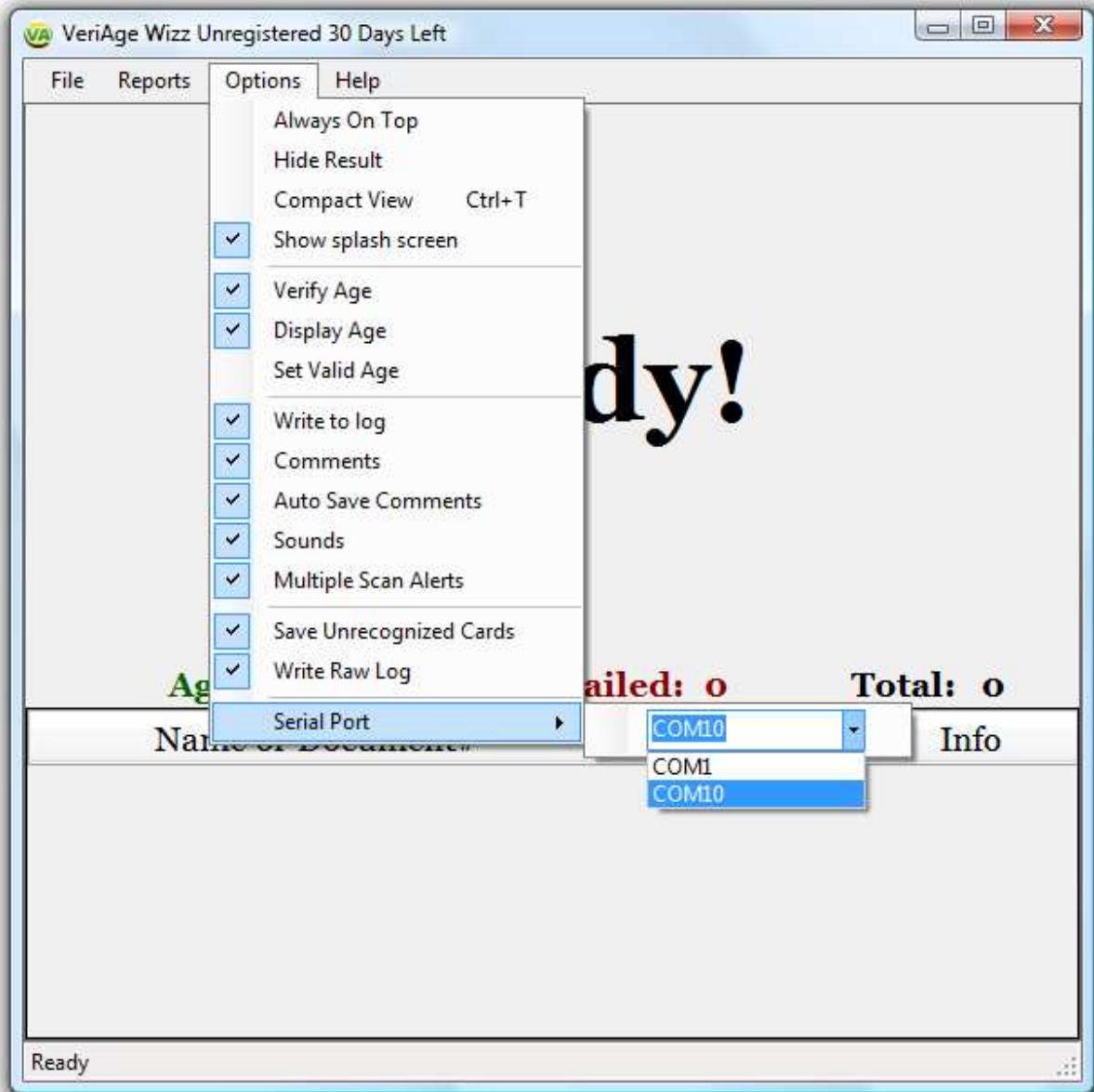
Step 2: Select **VeriAge Wizz Plus** in the Add or Remove Programs window and click "remove".

Step 3: In some cases, you will find that when removing software, there will be one or two files that the operating system will ask if you want them removed since they may be shared by other programs. If you are unsure, always opt to keep these files.

Getting Started

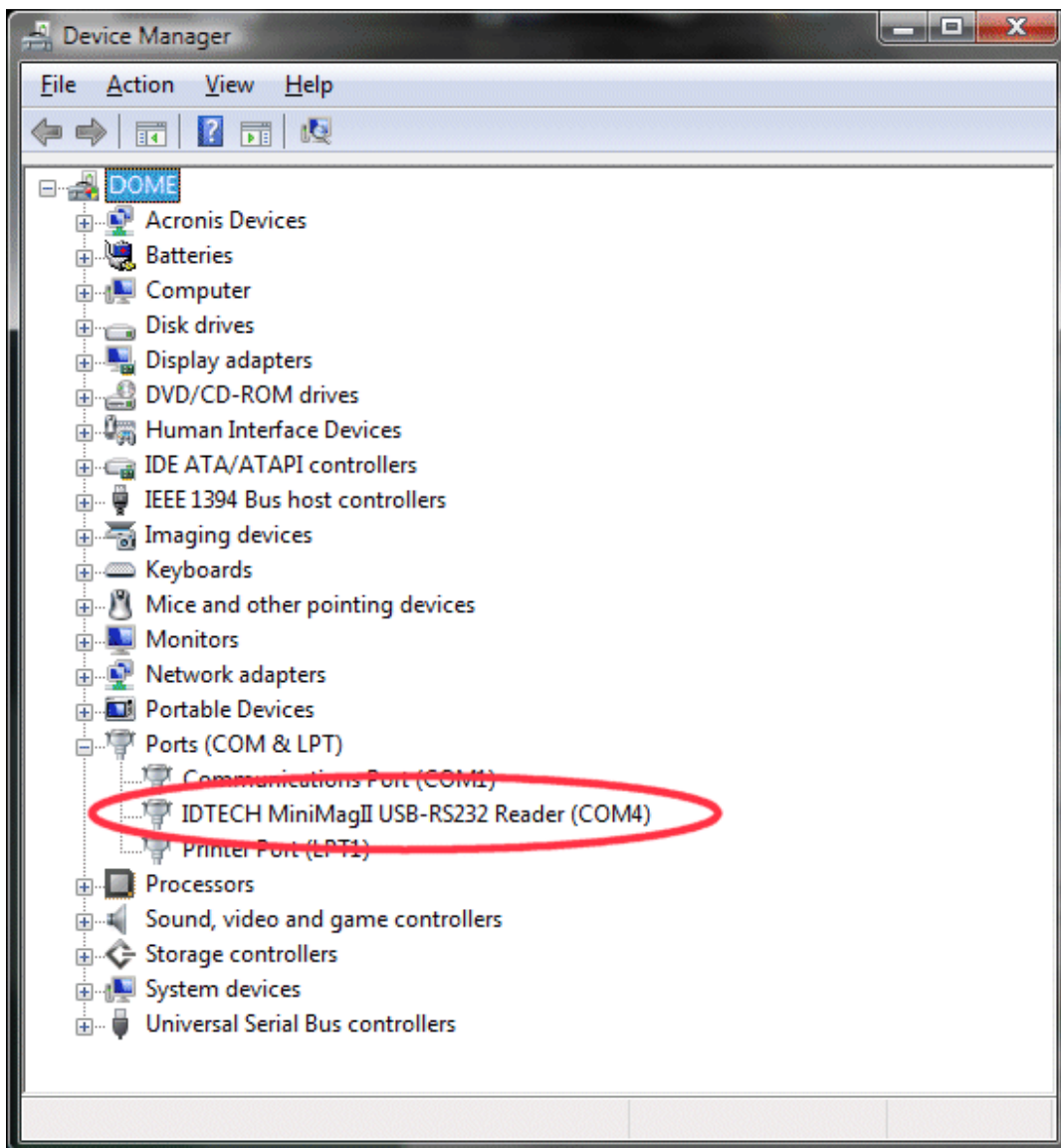
VeriAge Wizz Hardware configuration technique.

Once VeriAge Wizz application is installed please make sure to configure the software properly to work with hardware of your choice. This is done by selecting **Options** tab from the main menu of the program:

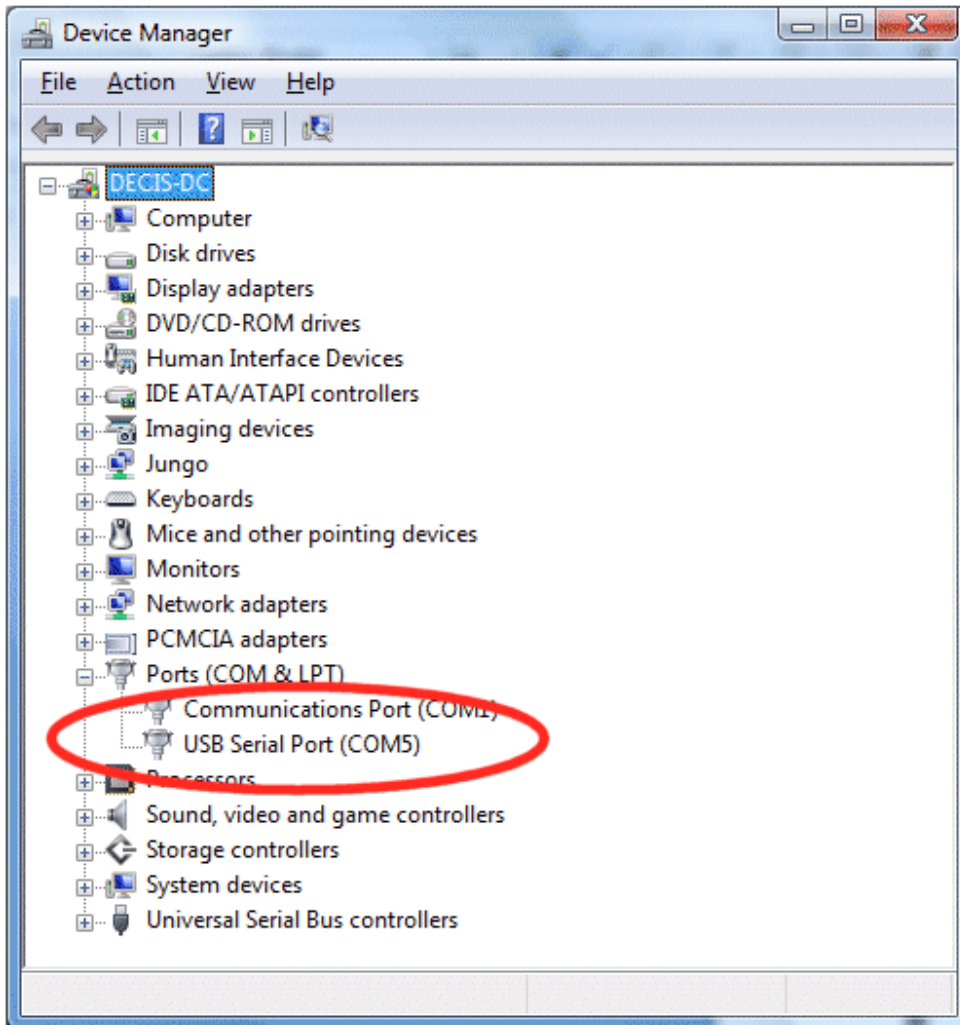


Please note that E-seek devices as well as magnetic readers with USB cables are considered “Serial Devices” and thus need to be configured accordingly. You can only use one device at a time.

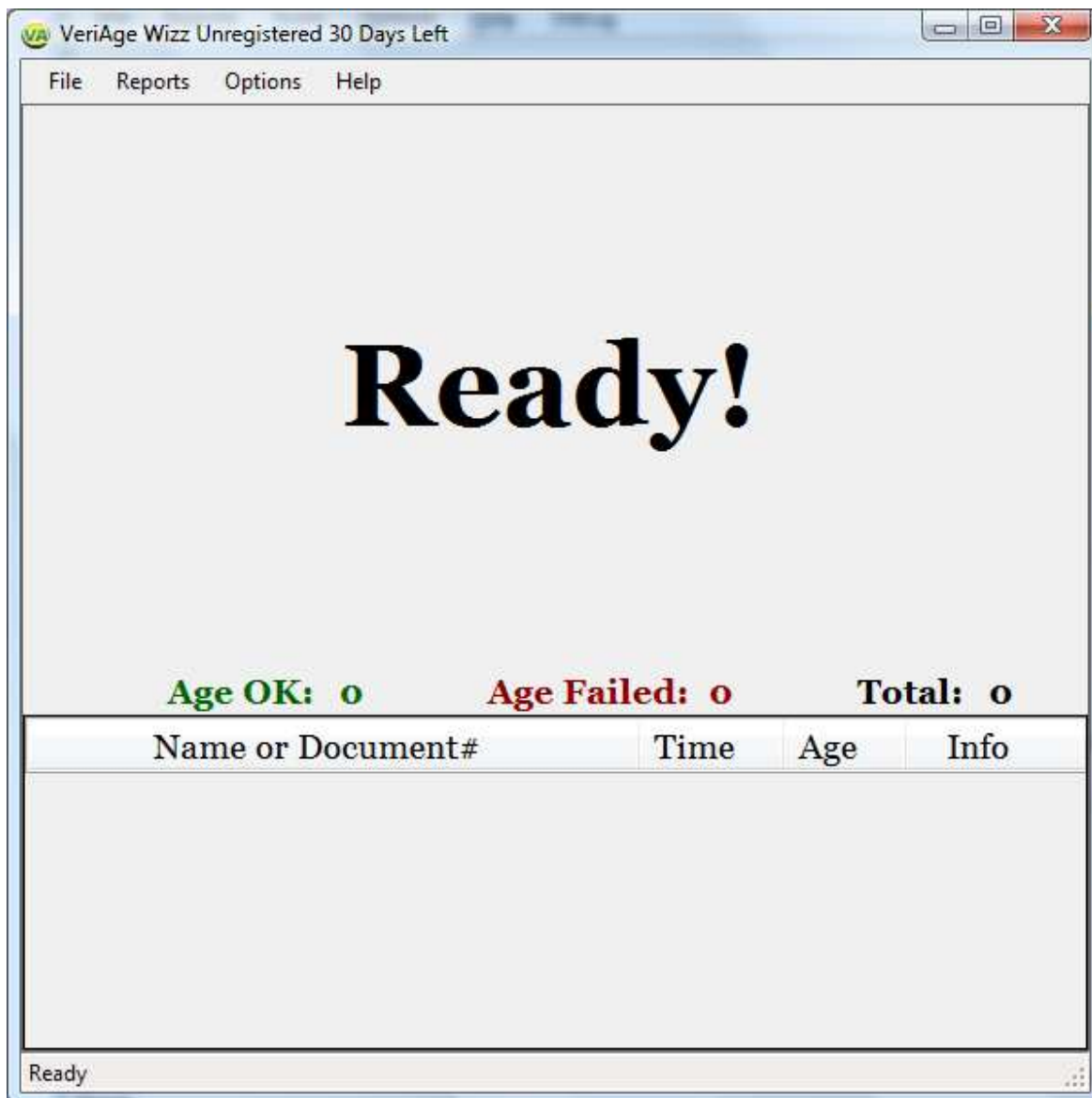
If you are not sure what COM port to select for your reader, simply go to Start/Control Panel/System and select Hardware tab. Then click Device manager and take a look on setting under Ports (COM and LPT). USB magnetic card reader should look similar to this picture (note COM4 Port):



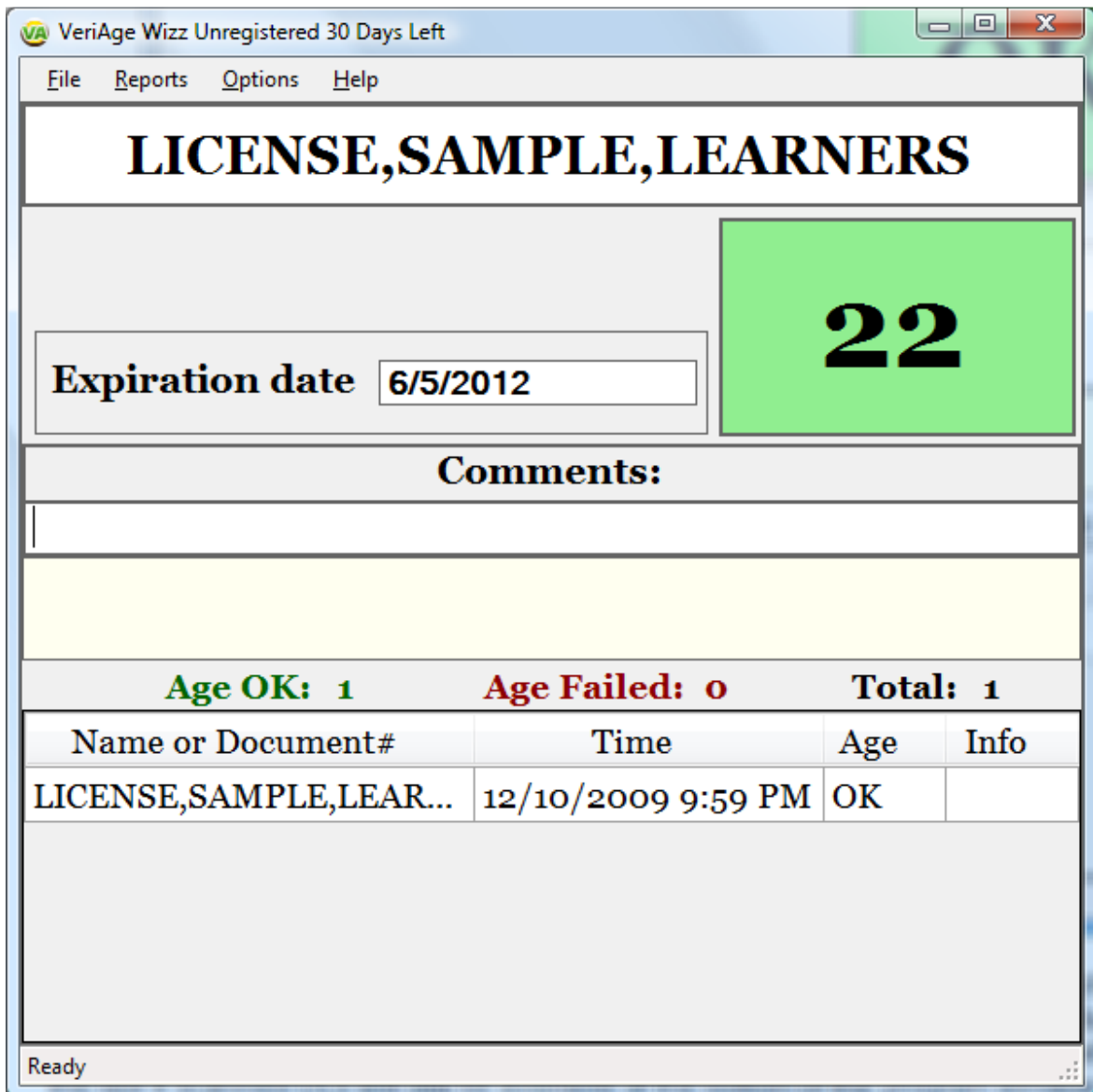
While E-seek devices look similar to this picture (note COM5 Port):



After installing the card reader device on your computer, run the VeriAge Wizz Plus program. Make sure the program's window is active and you see the word "Ready!" on your screen:



Upon sliding an ID through the reader, the program will decode information and display the name, DL expiration date and the age, in full years (optional) and date/ time of the scan.



This information will be displayed for as many seconds as set in the Options/Hide Results menu. Then it will be replaced with the sign READY. The information about the last 4 scanned DLs will still be available at the bottom of the program window.

When the sign **Ready** is displayed at the left bottom part of the screen, then program is ready to process the next DL. If after sliding an ID you see the note: "Unknown DL", try the following:

- Slide DL again
- Check the magnetic stripe, if it appears damaged – verify the age manually or use 2D Barcode (where available).

Versions

- **Demo** 30 days evaluation version, fully functional.

In this mode the program saves every 5th scan into the log-file in comma delimited format. (CSV, could be opened in MS Excel or Notepad)

- **Registered**, Fully functional.

In Registered mode all scanned information is saved into log file.

Registration

After the Demo mode of the program is installed you can use it for 30 days. In demo mode the program will save every 5th DL read to the log file. In 30 days you will have to either uninstall program or pay for the registration.

To pay for registration you need to go to our [web-site www.idScan.net](http://www.idScan.net) (or simply click **Help/Purchase License**) and pay either using our Secure Server (all major credit cards are accepted), Google Checkout or PayPal. Both ways are 100% secure and guaranteed. Then send us your *Computer ID* - **Menu Help -> Registration -> Send by e-mail**. You can also email this *Computer ID* to support@nautilusware.com along with your Order No.



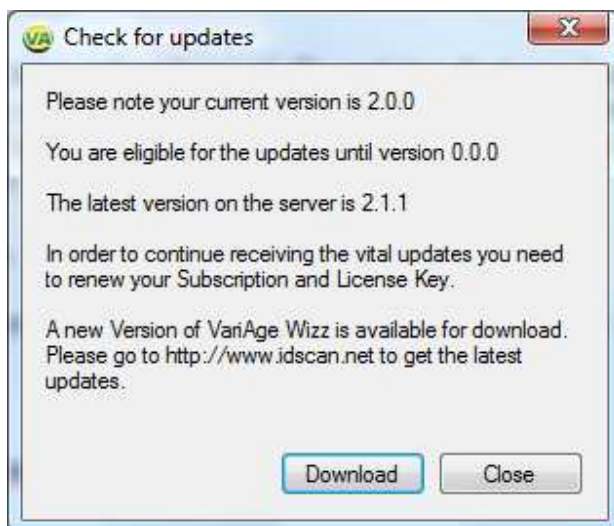
After the *License Key* is entered the program must be restarted. Then in the menu **About** you will see the status of your Registration.

Subscription Renewal

In order to take advantage of ID updates that are being released from different issuing authorities you will have to go through a process of renewing subscription. To do that simply email 2 pieces of information – *Computer ID* and *License Key* (see Registration part above for more details).

Software updates

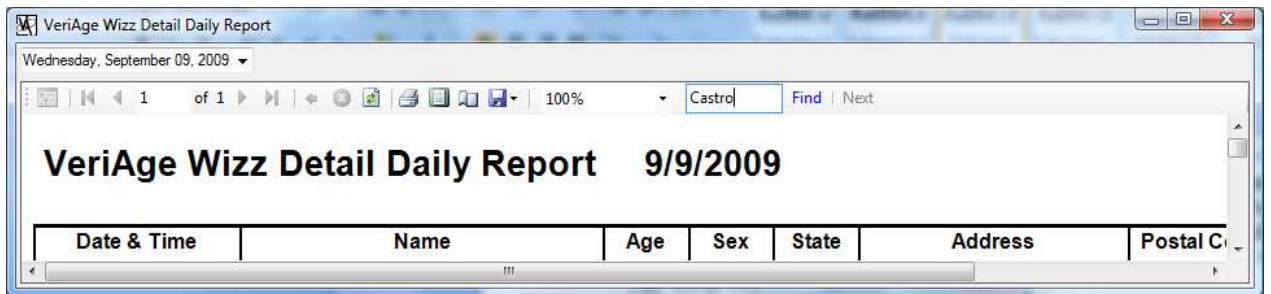
To check on the most recent Software Updates go to **Help/Check for a New Version**. A screen similar to the one below will appear:



This screen reflects your eligibility for the updates – it shows 1) What version do you currently have installed; 2) What version are you eligible to receive updates to (based on your paid subscription); 3) What is the latest version available on the server.

Reports

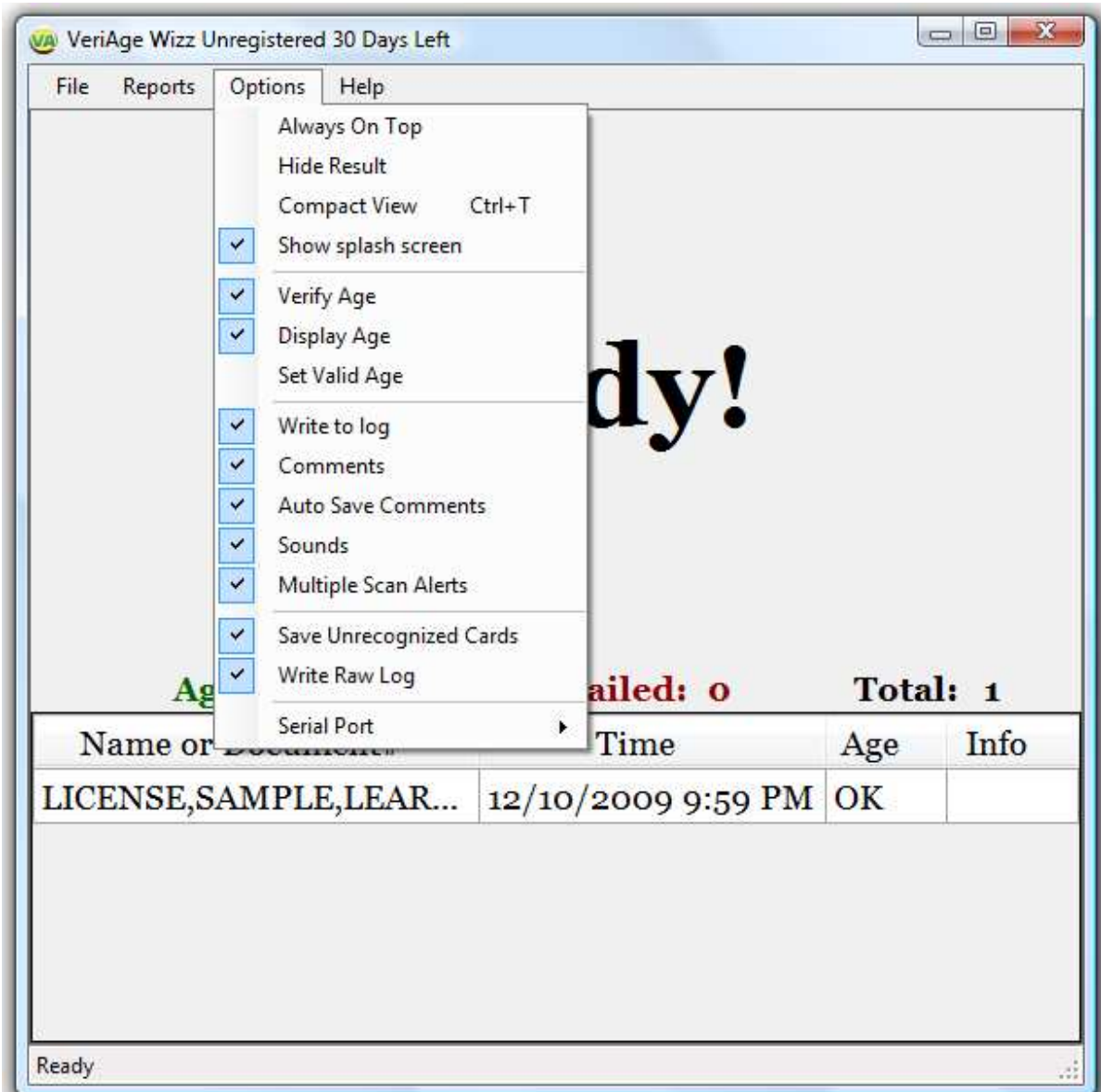
In addition to exporting data log (that has all available information, including time stamp of the scans), VeriAge Wizz Plus offers Daily Report via Reports Menu. Simply select date from the calendar. The report could be saved in Excel or PDF format and offers a quick summary breakdown of customers in addition to providing details such as Name, Age, Sex, Address, Scan Time/Date, etc.



In addition to providing report this option has **Find** feature to quick search data by any text string.

Options

To access various options and features of the VeriAge Wizz Plus click **Options** from the Main Menu. The drop down menu appears:

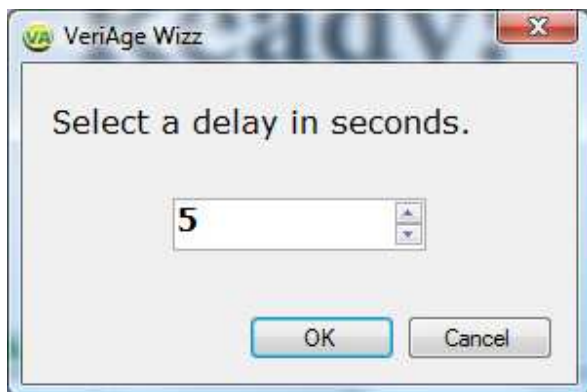


Always On Top

To prevent cursor leaving the VeriAge Wizz screen select this option.

Hide Results

Use this option to set up a number of seconds results from ID scan stay on the screen. Defaults value is 5 seconds; use 0 second to keep results on the screen until the next scan:

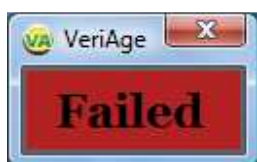


Compact View

By selecting this option (press **Ctrl-T** or go to **Options/Compact View**) your screen will take a very small window that will only display age of the ID holder:



If Option Display Age is NOT selected then the window will display OK or Failed message only, such as this:



Verify Age

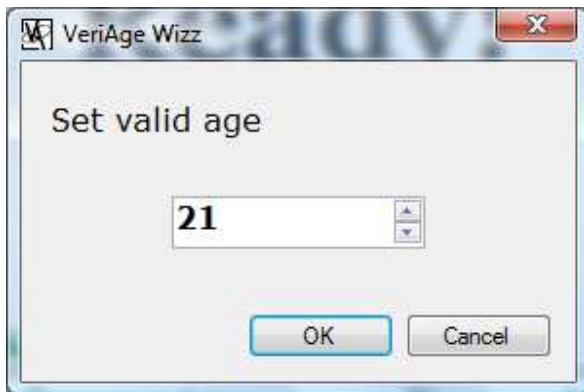
This option is set by default and allows a user to conduct age verification of customers. When age verification is not important, one can deactivate this feature.

Display Age

Under certain circumstances a user might want to disable the actual age displayed on the computer monitor when running the program. If option Display Age is NOT selected then only 2 words will appear when ID is scanned – **Failed** – if ID holder is under the Age limit (determined in **Options/Setup Valid Age**)

Set Valid Age

This option allows a user to flag underage visitors by displaying their age in red (underage will be shown in green color). You can manually enter a number associated with Valid Age by selecting Set Valid Age from the Options Menu (it is set to 21 by default)



Write to log

The program lets you save ID information to a log-file. To view/export data go to **File/View/Export Log**. The file is saved in the following formats: Text, Unicode Text, HTML or CSV (Comma Delimited File). You can open CSV file with practically any program intended to work with data (for example, MS Excel, MS Access, Lotus Office, etc), you can also import this file into any modern database. You can enable or disable log creation (menu Options -> Write to log).

Log-file can save the following fields:

Date/Time of DL scan, Name, City, State, Zip, Address, Sex, Date of birth, and other information from DL.

Log could be exported for all dates available or a certain period (such as a day or a week).



Comments

There is an optional function Comments that allows user to manually record any additional information about DL holder. If **Comments** is activated (by checking appropriate field in the Option Menu) then a special windows is available in the middle of the main screen for any alpha-numeric text input up to 4000 characters. Please note that Autosave option is in place for all entered comments or user can utilize **File/Save Comment** feature for manual saving of comments entered. This field is then stored as a separate value in the Log file.

The screenshot shows the VeriAge Wizz software interface. The window title is "VeriAge Wizz Unregistered 30 Days Left". The menu bar includes "File", "Reports", "Options", and "Help". The main display area shows the name "JANE Q SAMPLE" in large bold letters. Below the name, there is a green box containing the number "23". To the left of the green box, there is a text field labeled "Expiration date" with the value "8/2/2008". Below the expiration date, there is a section titled "Comments:" with a text input field containing "Type your comments here" and a "Save" button. Below the comments field, there is a yellow box containing the text "card is expired". Below the yellow box, there is a summary row showing "Age OK: 1", "Age Failed: 0", and "Total: 1". Below the summary row, there is a table with the following data:

Name or Document#	Time	Age	Info
JANE Q SAMPLE	12/10/2009 10:28 PM	OK	card...

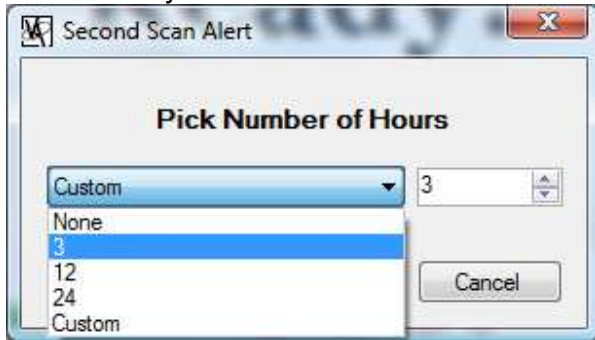
At the bottom of the window, there is a "Saving..." progress bar.

Sounds

Use this option to alert program operator about underage customer.

Multiple Scan Alerts

If you there is a business need to detect multiple scans of the same ID within certain number of hours, this task is accomplished via **Multiple Scan Alerts** option. Simply program VeriAge Wizz Plus to alert you about second (third, fourth and so forth) scan via Multiple Scan Alert menu (min. value = 1 hour) and a warning message will appear next time the very same card is scanned.



Write Raw Log

This option allows developers of this program and other computer professionals to take a close look at the actual data that is stored on the IDs that you scan.

Serial Port

This is a very important option to select the proper port to work with your scanner. It must be selected prior to scanning cards otherwise program will not work.

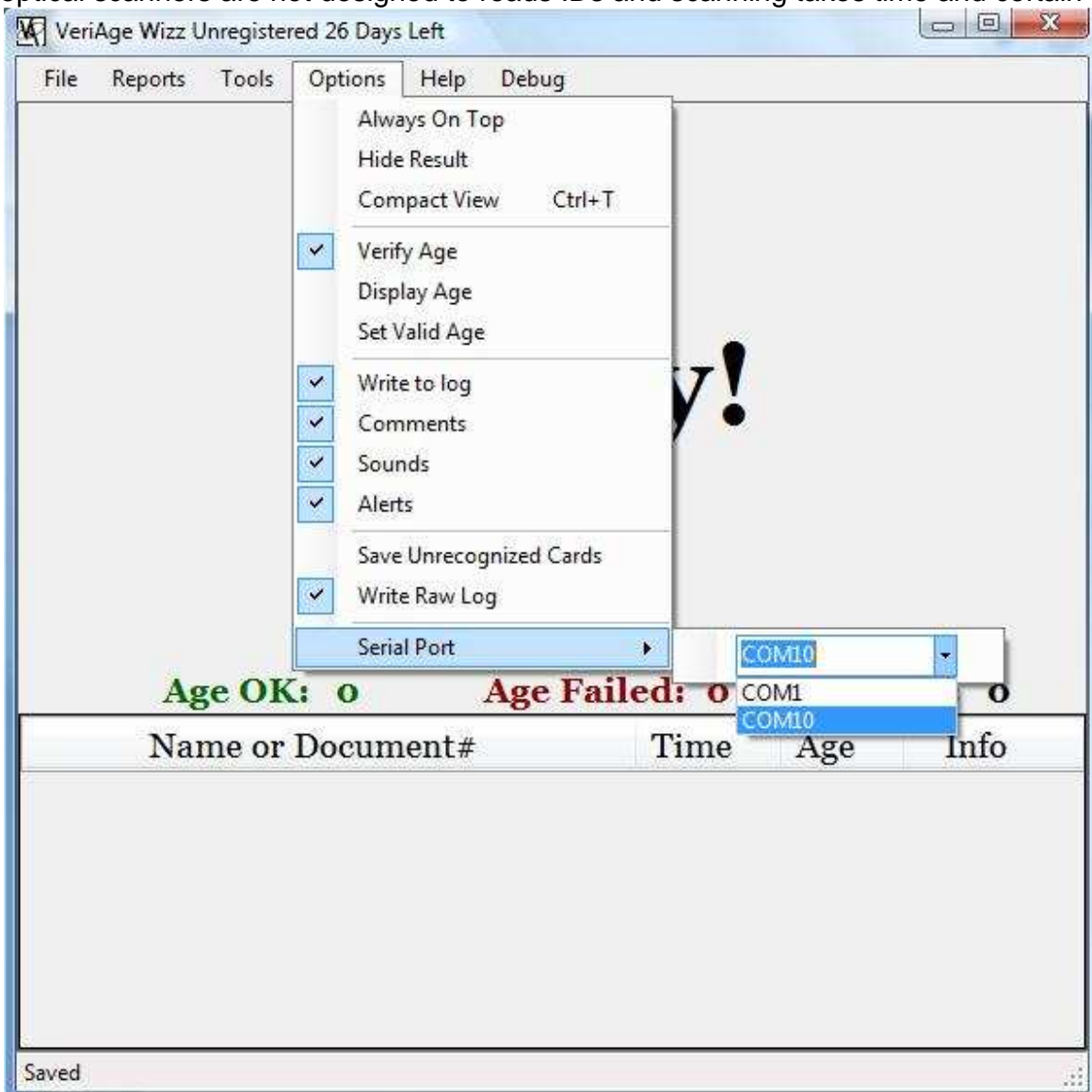
VeriAge Wizz Plus supports different type of devices, such as E-Seek reader device. The E-Seek Model 250, that we offer, incorporates a magnetic stripe reader with the 2D barcode reading technology. The Model 250 can read any government issued ID card with magnetic stripe information and 2D barcodes. This creates a **single device for reading virtually all government issued ID's**. The data is also transferred to the host device via USB. In case if you have both magnetic stripe and 2D the E-Seek is the best solution.



VeriAge Wizz Plus also works with USB magnetic



readers (3 tracks) and 2D bar code scanners such as Metrologic, although this type of optical scanners are not designed to reads IDs and scanning takes time and certain efforts.



Contacts

Wizz Systems LLC
8814 Veterans Memorial Blvd
Suite 3-124
Metairie, LA 70003 Phone: 1(888)430-8936

General: info@nautilusware.com
Support: support@nautilusware.com
Sales: sales@nautilusware.com
Web-sites: www.nautilusware.com
www.idScan.net

Copyright © 2002 - 2009 Nautilusware. All rights reserved.