



## Nautilus VeriScan Help

---

**Table of Contents**

Nautilus VeriScan Help ..... 1  
Table of Contents..... 2  
Introduction ..... 3  
Requirements for VeriScan ..... 3  
Getting Started ..... 3  
View/Export Log ..... 8  
Alerts ..... 8  
How to select a reading device..... 9  
Versions..... 9  
Contacts ..... 9

## Introduction

The Nautilusware VeriScan Program allows reading, displaying and saving information encoded in the magnetic stripe or barcode of membership cards, RFID devices or USA issued driver's licenses (both magnetic and 2D barcodes). The program works with virtually all types of ID scanning devices. Manual data entry via keyboard is also possible. VeriScan also provides the ability to capture and save a digital photograph into the database.

## Requirements for VeriScan

- x86 compatible PC computer with MS Windows 2000 or higher, min 128Mb RAM (256Mrb RAM recommended), 20Mb free space on HDD
- MS Framework 2.0 (free standard MS component)

Magnetic stripe reader, optical or RFID scanners using Keyboard wedge (PS/2 interface or USB) are optional devices if you wish to read data stored on magnetic cards, barcodes or RFIDs. Please note that if you wish to read information from Driver's Licenses you must have an optical scanner that reads 2D barcode (in the format pdf 417)

You can find additional information on how to obtain one of these readers on our web-site [www.nautilusware.com](http://www.nautilusware.com)

## Getting Started

Having installed the optional card reader device (such as magnetic card reader, optical scanner or RDIF scanner) on your computer, run the VeriScan program. Make sure that the program's window is active and you see a screen similar to the one below:

The VeriScan application window features a menu bar with 'File', 'Tools', 'Options', and 'Help'. The main form includes the following fields:

- Full name:** A single-line text input field.
- Card number:** A single-line text input field with a mouse cursor over it.
- Gender:** A dropdown menu.
- Category:** A dropdown menu.
- Comments:** A large, empty text area.

Below the form is a table with the following headers:

Name or Card #	Scan Time	Card Status Message

At this point you have three options to set the program to work with your cards or other media that contain your customers' data:

*Option #1:* Manually type all the applicable data using “Card Manager” feature from the Tools Menu:

The CardsManagerForm window displays a table with the following data:

	Active	Id	First Name	Last Name	Address	Gender	Birthday	Category	Comments	Last Access	Expiration Date	Created
▶	<input checked="" type="checkbox"/>	10001	John	Doe	1212 Apple St., New Orleans, LA	Male	8/10/1980	Main	Parking validation		10/13/2008	10/13/2006 9:44 PM
*	<input type="checkbox"/>											

Buttons for 'OK' and 'Cancel' are located at the bottom right of the window.

To fill in *Birthdate* and *Expiration* dates you can double click on the cell so a calendar will come down, alternatively you can type dates using a keyboard. *Created* field is populated with Today's date by default. *Last Access* field is a computer generated date based on last scan of the membership card.


*Option #2:* Scan or slide card, and then manually type applicable data


If you scan a card or other media which ID is not identified in the Card Manager Form then a screen similar to the one below will appear (card #2000 was used in the example)

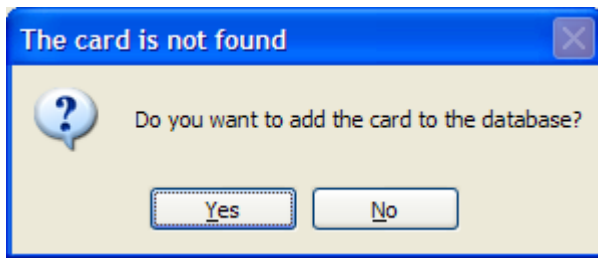
The screenshot shows the VeriScan application window. The title bar reads 'VeriScan' and the menu bar includes 'File', 'Tools', 'Options', and 'Help'. The form contains the following fields:

- Full name:
- Card number:
- Gender:
- Category:
- Comments:

A large red message is displayed in the center: **The card is not found**

Name or Card #	Scan Time	Card Status Message
 2000	6/21/2007 7:22 PM	The card is not found

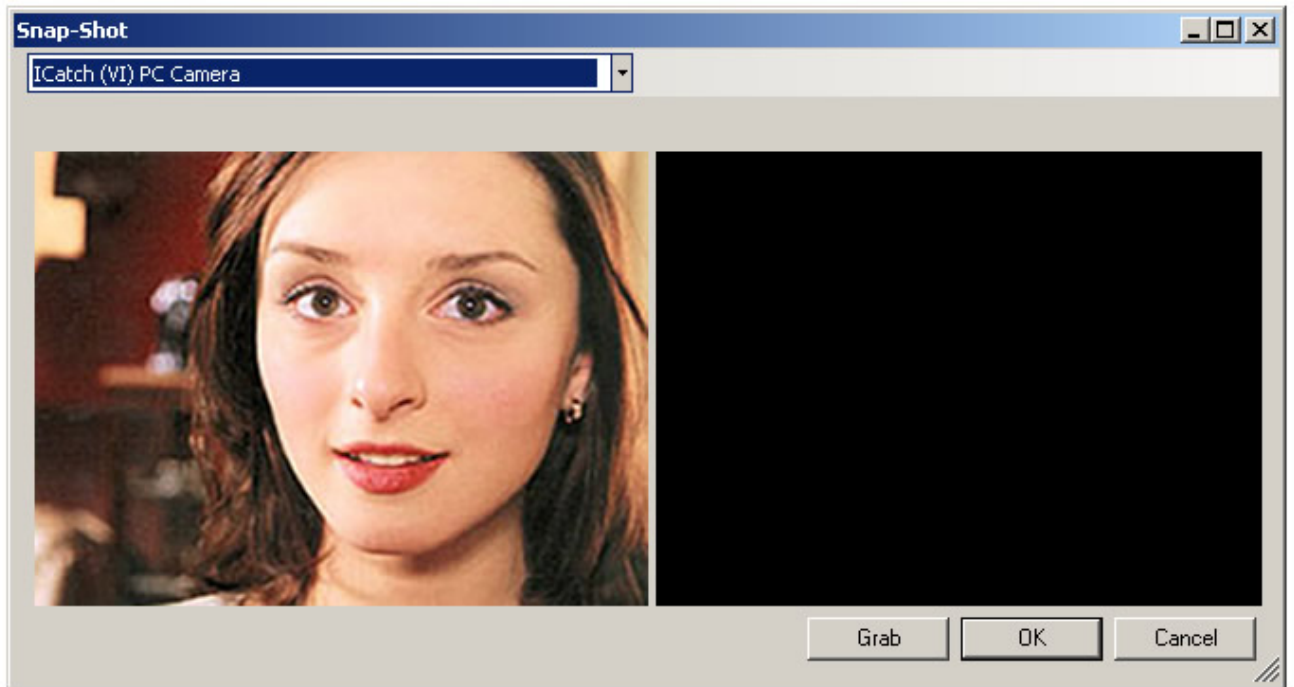
A system message "The card is not found" will appear. At the same time the card number will appear in the "Last Results" section (bottom part of the window) along with the time of the scan. At this point a user can click on an icon  to get to the *Card Manager Form* by clicking Yes.



The *Card Editor* will appear so a user can fill in all applicable fields.

A screenshot of the "Card Editor" application window. The window has a blue title bar with the text "Card Editor" and a close button. The main area is divided into two columns. The left column is titled "Card Info" and contains several fields: a checked "Active" checkbox, a text box with "2000", a "Created" field with "6/21/2007 7:22 PM", an "Expiration date" dropdown menu with "6/21/2007", and a "Last Access" field with "6/21/2007 7:22:42 PM". The right column is titled "Customer Info" and contains: "First Name" (Joan), "Last Name" (LeMonte), an empty "Address" text box, "Birthdate" (6/21/2007), "Gender" (Female), and "Category" (VIP). A large square button with the text "Click to capture photo" is located on the right side of the "Customer Info" section. At the bottom of the window, there is a "Comments" section with a text box containing "Very Good customer" and "OK" and "Cancel" buttons.

In this mode it is possible to take a picture of the card holder and store in the VeriScan database. Make sure the camera is connected to the computer and properly installed (please refer to manufacturer's installation guide for detailed instructions). Position a cursor over the square located in the right central part of the screen and then double click. A *Snap-Shot* form will appear:



Click *Grab* to capture the image of the person associated with the card. Then the image will be moved to a right square. Click *OK* to obtain the *Card Editor* that will look similar to this screen:

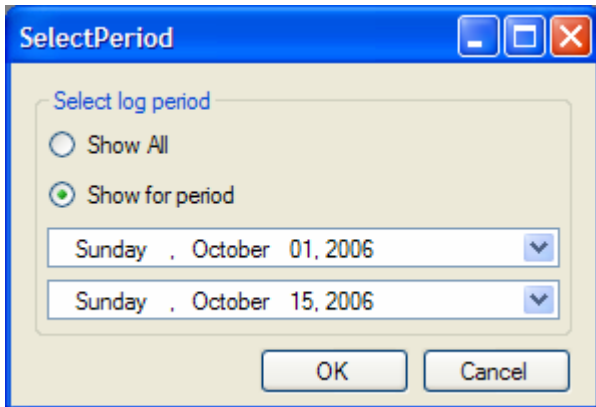
The image shows a "Card Editor" dialog box with a blue title bar. It is divided into several sections:

- Card Info:** Contains a checked "Active" checkbox, a text field with "2000", a "Created" field with "6/21/2007 7:22 PM", an "Expiration date" dropdown menu with "6/21/2007", and a "Last Access" field with "6/21/2007 7:22:42 PM".
- Customer Info:** Contains a "First Name" field with "Joan", a "Last Name" field with "LeMonte", an "Address" field, a "Birthdate" dropdown menu with "6/21/2007", a "Gender" dropdown menu with "Female", and a "Category" field with "VIP". A small thumbnail image of the woman from the Snap-Shot dialog is positioned to the right of the "Last Name" field.
- Comments:** A text area containing the text "Very Good customer".

At the bottom right, there are "OK" and "Cancel" buttons.

## View/Export Log

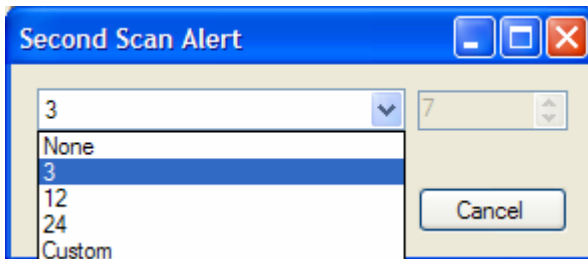
If "Write to Log" is selected in the *Options* menu it is possible to View and Export a detailed log of scans to a file in a number of different formats: Text (.txt), Unicode Text (.txt), Rich Text/MS Word (.rtf), HTML, Comma separated value (.csv). Such export is possible for all records in the database or for a specific period only:





Upon selecting the period and a file format click on *Export* button to save the log to a file on your computer or network.

## Alerts

VeriScan has the ability to alert an operator upon scanning a card for a second time within a certain period. Such period could be customized upon a business rule in place.

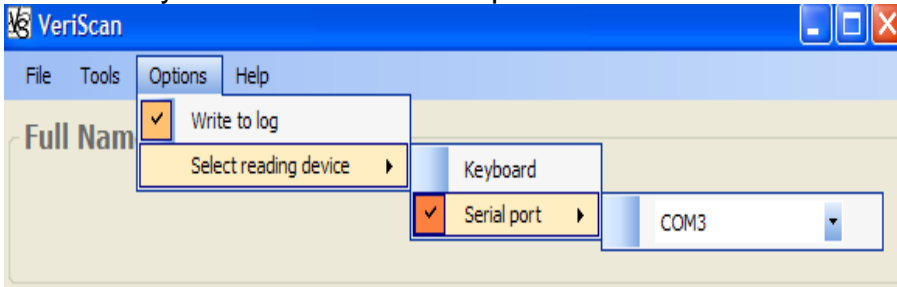


For instance if the option of 3 (hours) is selected as it is shown above, then the operator will receive the following message if the card is scanned within 3 hours of the first scan:

The card was already used within 3 hours			
	Name or Card #	Scan Time	Card Status Message
	2000	6/21/2007 7:31 PM	The card was already used within 3 hours
	2000	6/21/2007 7:22 PM	The card is not found

## How to select a reading device.

The program works with devices of multiple types, which could be connected to the computer either via keyboard, USB or serial ports. Please note that USB devices are managed either via serial or keyboard port option, and a new COM port will appear as soon as serial type device is successfully connected to the computer.



In order for the program to work correctly the program window has to be active when you slide the ID card or driver's license if you use the keyboard type of device. When VeriScan is started the mouse pointer can't leave the VeriScan window.

## Versions

- **VeriScan Light** is fully functional with 50 records max. Free.
- **VeriScan Dorado** is fully functional with unlimited number of cards and unlimited log records; optional assistance with the first records export to VeriScan database is available.
- **VeriScan Dorado SQL Server** is fully Network functional with unlimited number of cards; optional assistance with the first records export to VeriScan database is available.

## Contacts

**Nautilusware Inc.,  
5000 West Esplanade Ave., #405  
Metairie, LA  
70006, USA**

General e-mail: [info@nautilusware.com](mailto:info@nautilusware.com)  
Support: [support@nautilusware.com](mailto:support@nautilusware.com)  
Sales: [sales@nautilusware.com](mailto:sales@nautilusware.com)

[www.nautilusware.com](http://www.nautilusware.com)