

WizzForm – ID data capture application for any PC software with text input fields



(by IDScan.net)

This publication contains proprietary information of the Wizz Systems LLC, provided for customer use only. No other use is authorized without the express written permission of Wizz Systems LLC.



WizzForm—data capture ID card processing devices running Windows OS. Reads Magnetic Stripe and 2D Barcode (PDF417) from Driver's Licenses and State IDs.

Introduction	3
Requirements for WizzForm	4
Installing the WizzForm application	5
Getting Started	6
Data field settings	9
Registration	13
Supported Devices and Readers.....	14
Contacts	14

Introduction

IDScan.net's WizzForm Program allows the auto filling of applications and forms by reading information encoded in the magnetic stripe or 2D barcode (PDF417) of US and Canada Driver's Licenses (DL) and State IDs.

The program runs in the background and is capable of populating forms that require keystroke entries – such as MS Word, Excel, Access, POS, HTML web forms, etc.

The issuing authority (a statutorily authorized agent organization that issues driver licenses and/or identification cards such as Ministry of Transport, Department of Motor Vehicles, or Police Agency), encodes certain information about a person in the magnetic stripe and/or 2D barcode, printed on the back of an ID.

That information includes the Name of the person, Full Address, Gender, Date of Birth, and other information required by the issuing authority.

WizzForm is capable of reading practically all of the USA and Canada standards (excluding DLs from Georgia issued prior to fall of 2009).

Partial list of DL fields (where available):

Last Name	Birthday
First Name	Drivers License Number
Middle Name	License Expiration Date
Address1	Gender
Address2	Height
City	Weight
State	Hair Color
Zip Code	Eye Color

Requirements for WizzForm

- x86 compatible PC computer with MS Windows XP or higher with .NET Framework (free download) and a minimum of 512Mb RAM.
- Magnetic stripe reader capable of reading three tracks (not just two, which is used for a majority of credit cards) and/or a 2D Barcode (PDF417) scanner.
- WizzForm works with maximum of 2 ID capturing devices at a time (such as magnetic card reader and 2D barcode scanner).

Please note that some devices require necessary adjustments. If you need any help with setting up your device please visit our FAQ section (www.idscan.net/forum) or send an e-mail to support@idscan.net

You can find additional information on how to obtain or setup readers/scanners on our web-site www.IDScan.net

Installing the WizzForm application

Step 1: Insert the WizzForm CD-ROM into your CD/DVD drive on your PC.
If you have a feature called "autorun" activated, this will start your installation process automatically.

If you do not have "autorun" activated, you can go to My Computer > Click on the drive letter of the CD/DVD drive > click WizzFormSetup.exe

Step 2: Follow prompts until you are finished installing the software.

Step 3: Restart your PC.

You can also download the installation file from our website (in that case you do not need a CD): <http://idscan.net/downloads.html>

Uninstalling the WizzForm application

Step 1: Go to Start > Control Panel > Add or Remove Programs. In some operating systems, you will find - Start > Settings > Control Panel.

Step 2: Select WizzForm in the Add or Remove Programs window and click "remove."

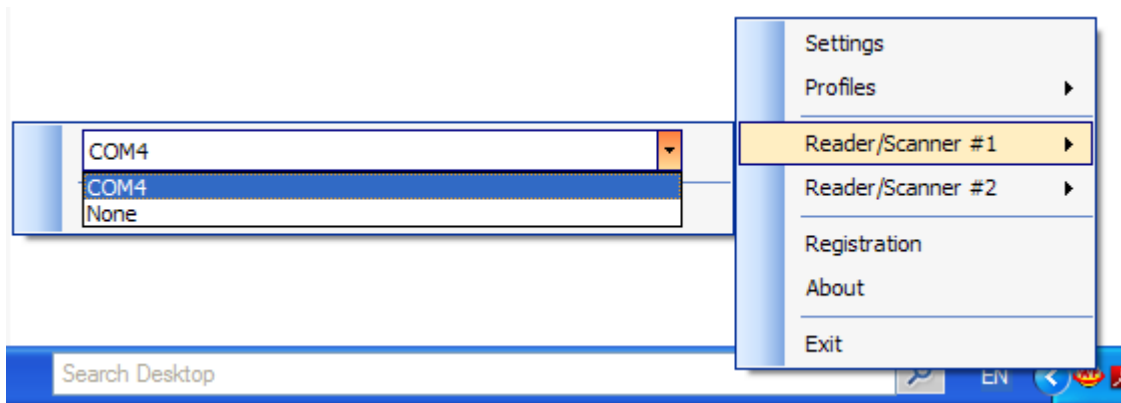
Step 3: In some cases, you will find that when removing software, there will be one or two files that the operating system will ask if you want them removed since they may be shared by other programs. If you are unsure, always opt to keep these files.

Getting Started

WizzForm Hardware Configuration Technique

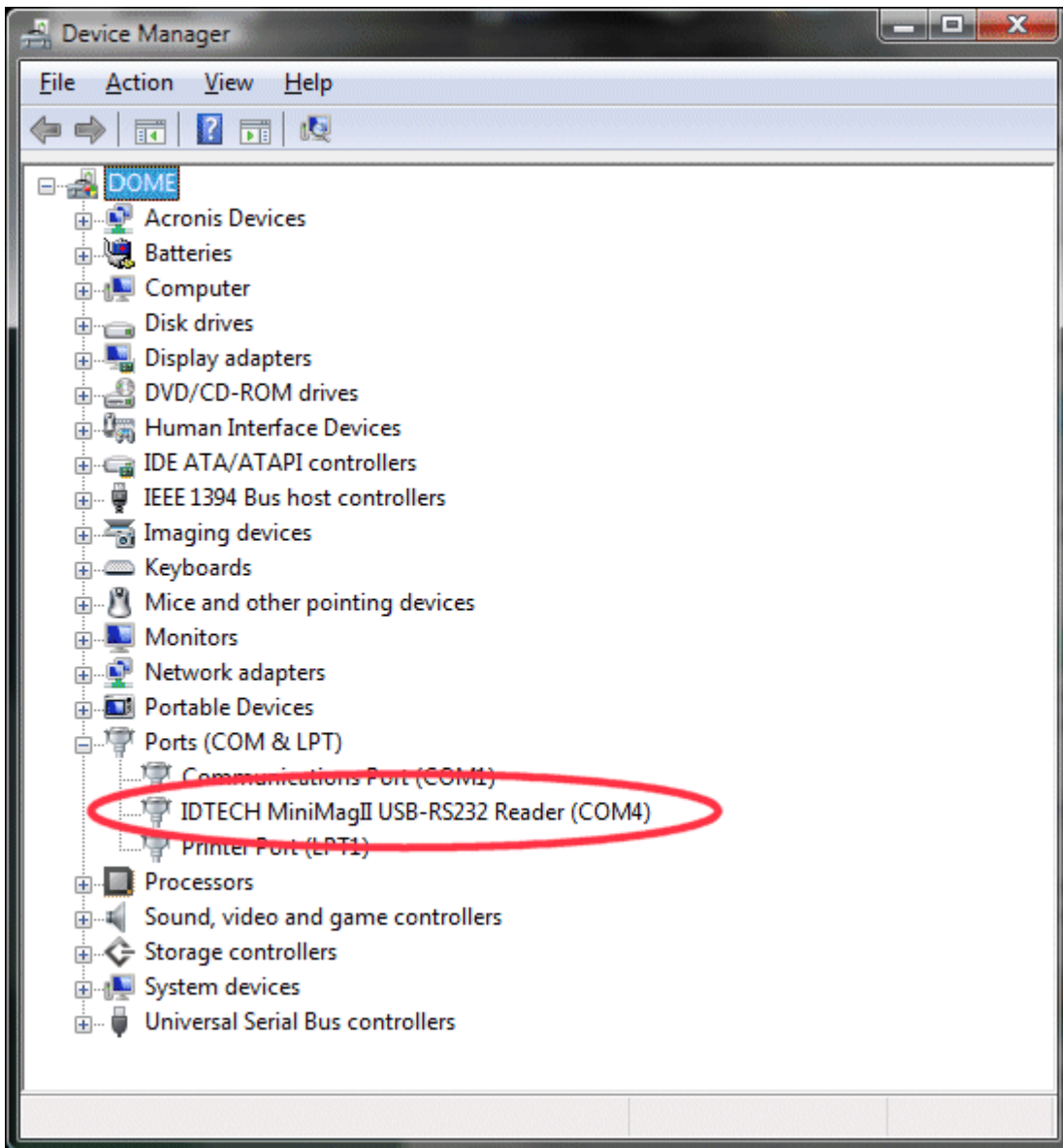
Connect the reader(s) before you start the software.

Once the WizzForm application is installed, please make sure to configure the software properly to work with the hardware of your choice. This is done by selecting the **Reader/Scanner #1** drop down from the main menu of the program:

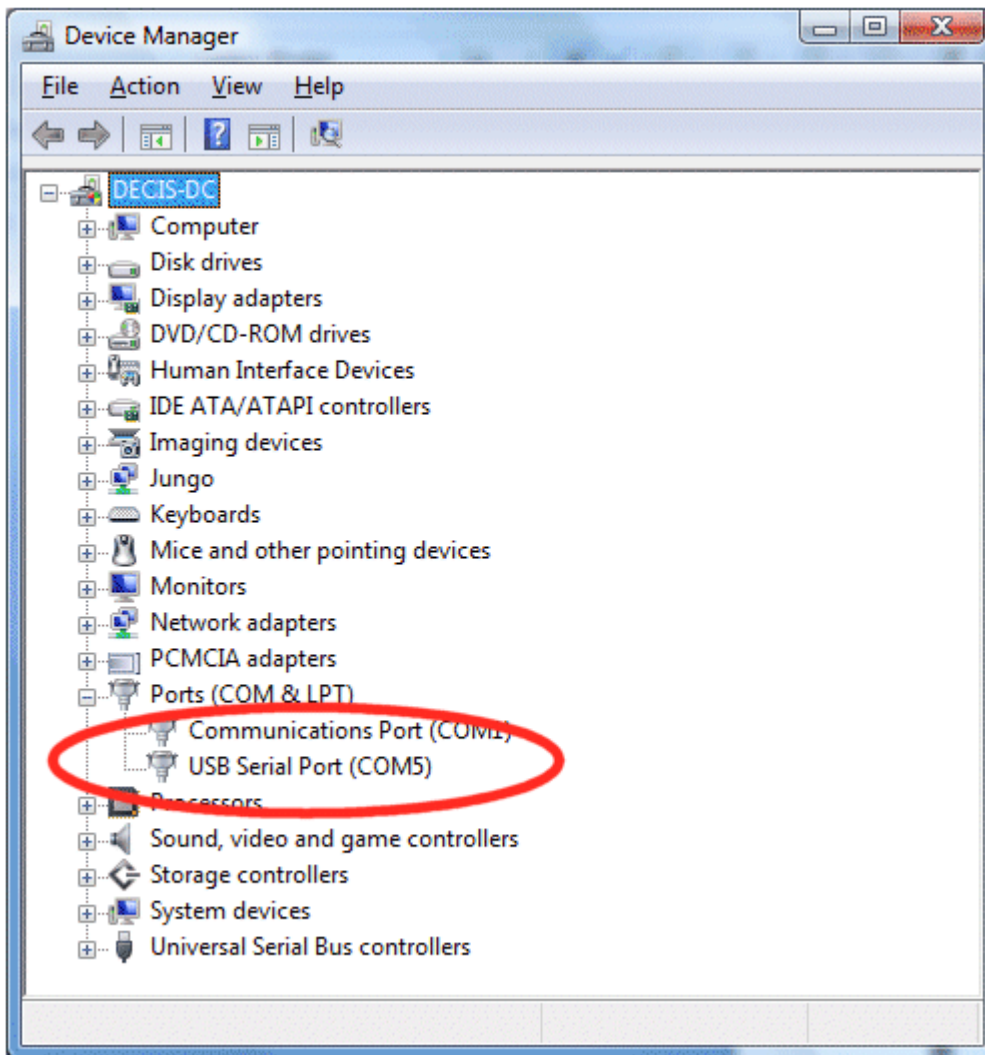


If you have more than one ID reader/scanner **connected to a different COM-port**, please select your port accordingly in the **/Scanner #2** drop down from the main menu of the program

If you are not sure which COM port to select for your reader, simply go to the **Start/Control Panel/System** and select the **Hardware** tab. Then click **Device Manager** and take a look at the setting under Ports (COM and LPT). The USB magnetic card reader should look similar to the one illustrated in the picture below (note COM4 Port):



E-seek devices look similar to this picture (note COM5 Port):



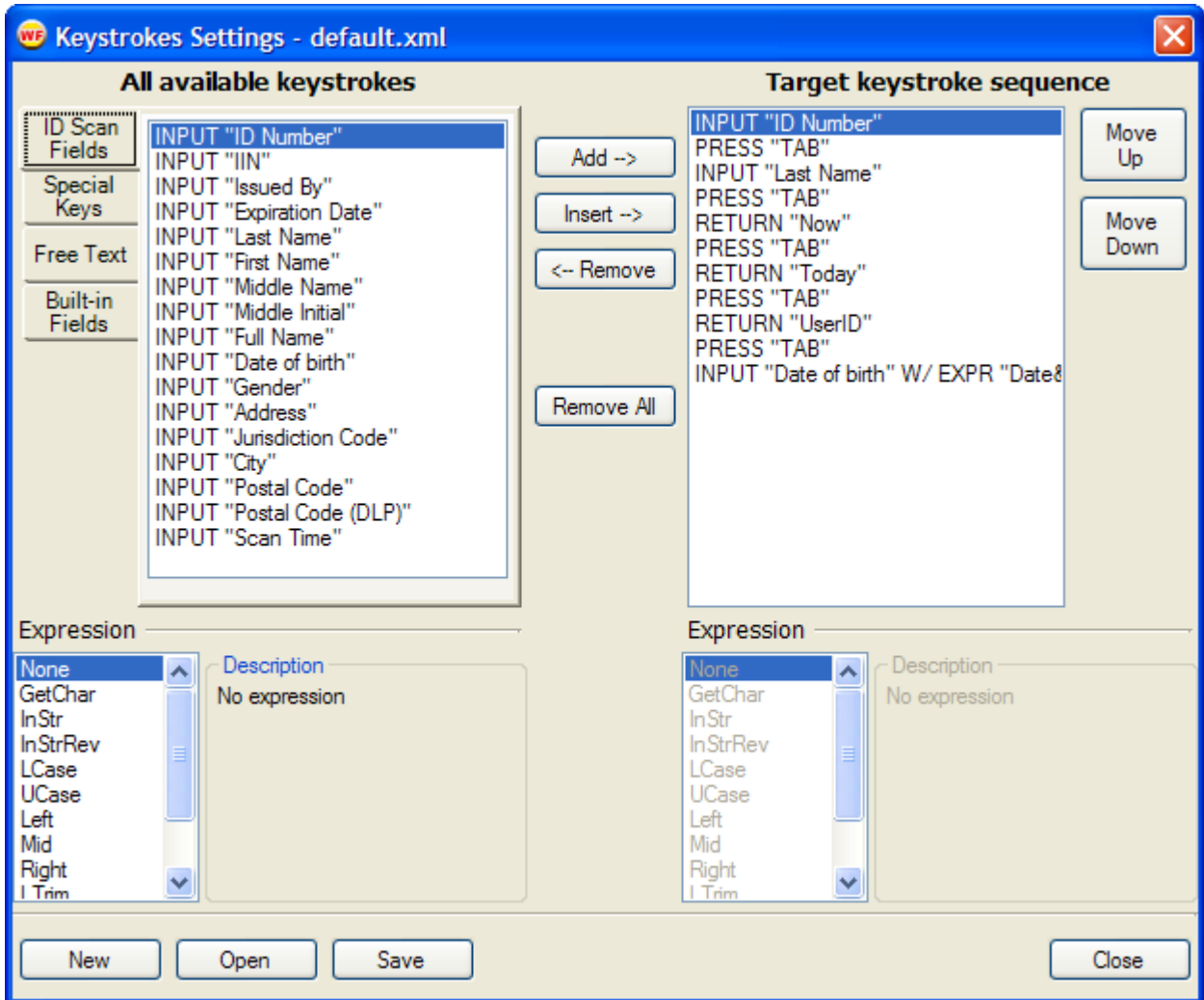
After installing a card reader device(s), run the WizzForm program.

Please note that without the proper reader device(s) manual configuration, WizzForm will not work.

Data field settings.

Access Keystrokes settings by right clicking WizzForms icon on your Task bar in the lower right corner.

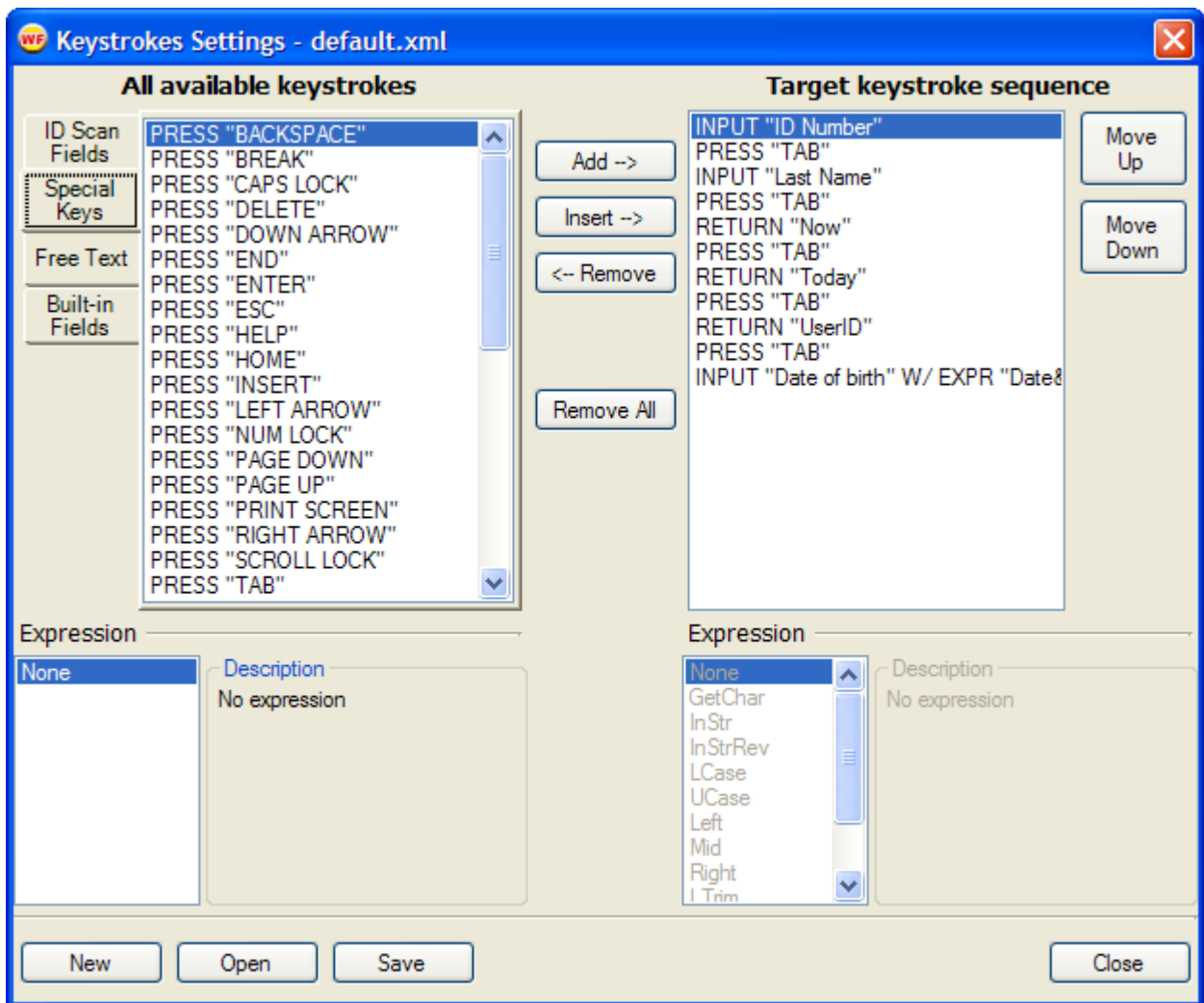
IDs Fields menu (please note that not all the fields might be available based on the ID issuing authority)



Select the ID fields in the order you want your application to be populated. Separate ID fields by special keys, such as TAB (based on the application running) – see Special Keys menu below.

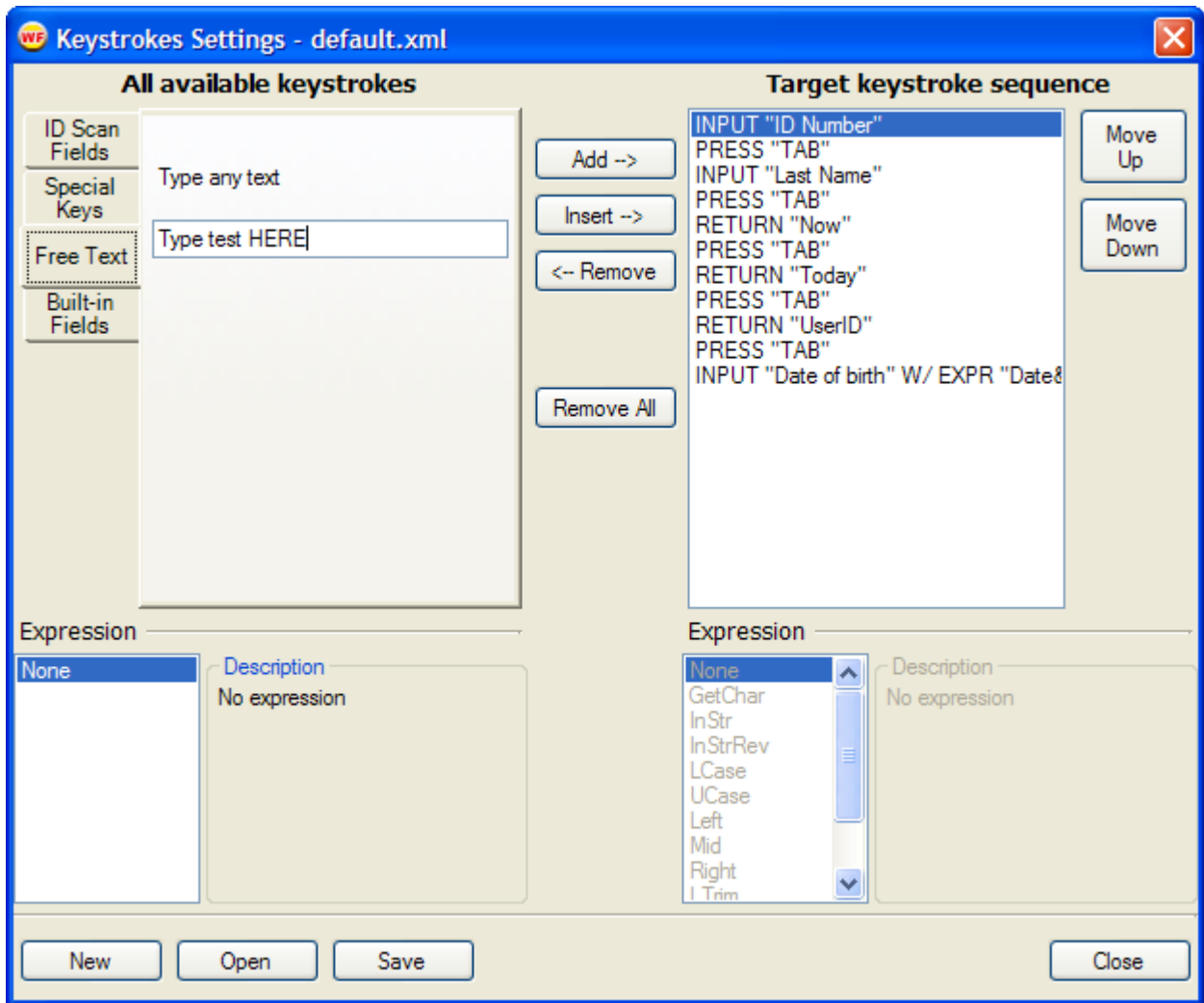
Hint: use the Expression submenu on the menu if you need to configure a field to meet your form specific requirement, such as converting a *Last Name* field from ID to Uppercase or enter *Date of Birth* in a specific date format, such as MMDDYY

Special Key Setting Menu:



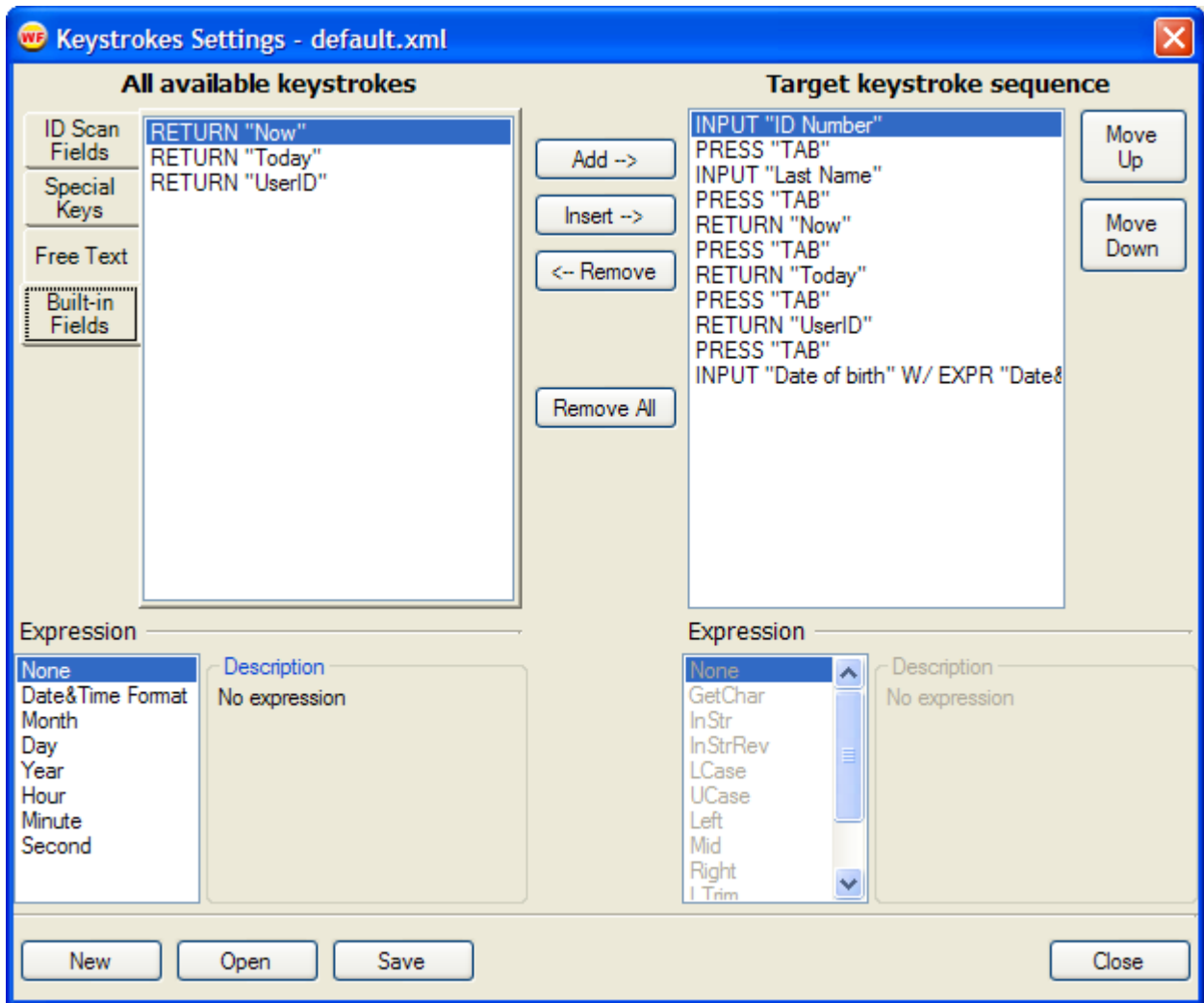
Special keys are required to separate data entry fields from each other. For instance, if you type in your form a Last Name, then press TAB and type First Name, then you are required to use Special Key TAB.

Free Text menu:



Use this menu to type any text, that needs to be populated with every ID scan (such as “Event ABC in New York, NY”)

Build-in Fields menu:



Use this field to populate your form with system generated values such as TODAY or UserID.

Important: After you configure the Keystroke settings, make sure to save the configuration file by pressing **Save** button. Please note that you can have unlimited number of Keystrokes Settings configuration files (when you have multiple forms to fill in, for instance).

After saving the configuration file, click **Close**. Then run the program with which you are trying to populate the ID data (such as MS Excel, POS, Internet Explorer with web forms, etc).

Operation

Slide an ID (such as US or Canada issued Driver's License) through the reader and the program will decode information and populate the preprogrammed fields in your form.

Registration

A demo (complimentary) mode of the program allows only 100 scans. After 100 scans, you will have to uninstall the program or pay for a full program registration.

To pay for a full registration, please go to our web-site www.IDScan.net and pay either using our secure server (all major credit cards are accepted) or PayPal.

All options are 100% secure and guaranteed. Then send us your *Computer ID* by going to **Registration > Send by E-mail**. You can also email the *Computer ID* to support@idscan.net along with your order number.

Computer ID
Computer ID is a unique number for each computer. Based on this number a unique Registration Key will be created and sent to you for program activation. Please note that 1 (one) Registration Key is valid for 1 (one) computer only.

1F591-CHEBARA-001A-0509

Send by e-mail

License Key
Copy license key to text-box and click Register button for registration. Click Purchase License if you have no license yet.

Register

Close

After the *License Key* is entered, please press **Register**. You can view the status of your Registration via the **About** menu.

Supported Devices and Readers

WizzForm supports different types of devices, such as the E-Seek ID card reader M-200/M-250/M-260. The E-Seek Model 250, available on our web site, incorporates a magnetic stripe reader with 2D barcode reading technology.

The Model 250 can read any government-issued ID card with magnetic stripe information and 2D barcodes. This creates a **single device for reading virtually all government-issued ID's**. The data is also transferred to the host device via USB. In case you have both magnetic stripe and 2D types, the E-Seek model is the best solution.



M-250

*All valid government
Issued drivers' licenses
and ID cards can now
be electronically read
by one device.*

WizzForm also works with USB magnetic readers (three tracks) and 2D barcode scanners such as Metrologic, although this type of optical scanner is not designed to read IDs and scanning takes much more time and effort.

Contacts

Wizz Systems LLC
8814 Veterans Memorial Blvd
Suite 3-124
Metairie, LA 70003 USA

Phone: 1(888) 430-8936

General: info@idscan.net
Support: support@idscan.net
Sales: sales@idscan.net
Web-sites: www.nautilusware.com; www.IDScan.net